

## Synaptotagmin antibody [ASV30]

Cat. No. GTX13259

<b>Host</b>	Mouse
<b>Clonality</b>	Monoclonal
<b>Isotype</b>	IgG2a
<b>Applications</b>	WB, ICC/IF, IP, IHC
<b>Reactivity</b>	Mouse, Rat, Rabbit, Bovine, Xenopus laevis, Shark

Package  
100 µg

## Applications

## Application Note

ICC: Use at an assay dependent dilution. IHC: Use at an assay dependent dilution. IP: Use at an assay dependent dilution. WB: Use at a concentration of 2 µg/ml. Detects a band of approximately 65 kDa (predicted molecular weight: 50.5 kDa). Optimal dilutions/concentrations should be determined by the end user.

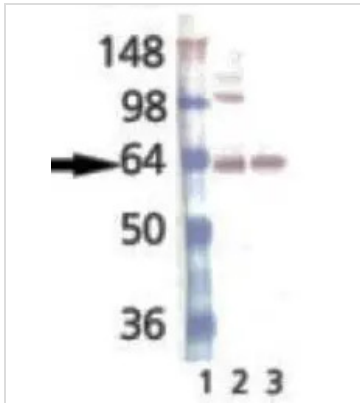
## Properties

<b>Form</b>	Liquid
<b>Buffer</b>	PBS, 50% Glycerol, 0.1mM PMSF
<b>Preservative</b>	No preservatives
<b>Storage</b>	Store as concentrated solution. Centrifuge briefly prior to opening vial. For short-term storage (1-2 weeks), store at 4°C. For long-term storage, aliquot and store at -20°C or below. Avoid multiple freeze-thaw cycles.
<b>Concentration</b>	2.61 mg/ml (Please refer to the vial label for the specific concentration.)
<b>Immunogen</b>	Rat brain synaptic junctional protein complexes.
<b>Purification</b>	Protein G purified This antibody has been affinity purified.
<b>Conjugation</b>	Unconjugated
<b>Note</b>	For laboratory research use only. Not for any clinical, therapeutic, or diagnostic use in humans or animals. Not for animal or human consumption.  Purchasers shall not, and agree not to enable third parties to, analyze, copy, reverse engineer or otherwise attempt to determine the structure or sequence of the product.



For full product information, images and publications, please visit our [website](#).

## DATA IMAGES

**GTX13259 WB Image**

WB analysis of Mouse Brain Tissue Lysate (Lane 1) and Rat Brain Tissue Lysate (Lane 2)



For full product information, images and publications, please visit our [website](#).