

## PI3 kinase p85 (phospho Tyr467)/p55 (phospho Tyr199) antibody

**Cat. No. GTX132597**

|                     |                   |
|---------------------|-------------------|
| <b>Host</b>         | Rabbit            |
| <b>Clonality</b>    | Polyclonal        |
| <b>Isotype</b>      | IgG               |
| <b>Applications</b> | WB, ICC/IF        |
| <b>Reactivity</b>   | Human, Mouse, Rat |

References ( 24 )

★★★★★ Review ( 1 )

Package

100 µl, 25 µl

## Applications

**Application Note**

\*Optimal dilutions/concentrations should be determined by the researcher.

| Suggested dilution | Recommended dilution |
|--------------------|----------------------|
| WB                 | 1:500-1:3000         |
| ICC/IF             | Assay dependent      |

Not tested in other applications.

**Calculated MW** 84 kDa. ( [Note](#) )

## Properties

|                      |  |
|----------------------|--|
| <b>Form</b>          | Liquid   |
| <b>Buffer</b>        | PBS, 1% BSA, 20% Glycerol  |
| <b>Preservative</b>  | 0.025% ProClin 300   |
| <b>Storage</b>       | Store as concentrated solution. Centrifuge briefly prior to opening vial. For short-term storage (1-2 weeks), store at 4°C. For long-term storage, aliquot and store at -20°C or below. Avoid multiple freeze-thaw cycles. |
| <b>Concentration</b> | 0.5 mg/ml (Please refer to the vial label for the specific concentration.)   |
| <b>Immunogen</b>     | Carrier-protein conjugated synthetic peptide surrounding phospho Tyr467 of human PI3 kinase p85. The exact sequence is proprietary.  |
| <b>Purification</b>  | Purified by antigen-affinity chromatography.   |
| <b>Conjugation</b>   | Unconjugated   |

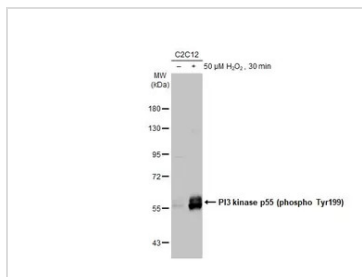
**Note**

For laboratory research use only. Not for any clinical, therapeutic, or diagnostic use in humans or animals. Not for animal or human consumption.

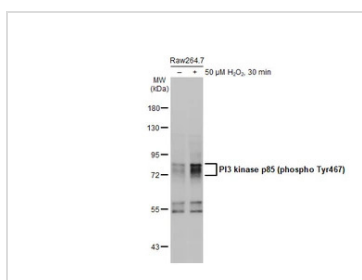
Purchasers shall not, and agree not to enable third parties to, analyze, copy, reverse engineer or otherwise attempt to determine the structure or sequence of the product.

For full product information, images and publications, please visit our [website](#).

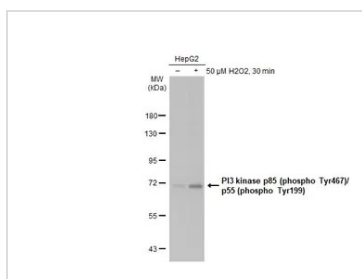
## DATA IMAGES

**GTX132597 WB Image**

Untreated (-) and treated (+) C2C12 whole cell extracts (30 μg) were separated by 7.5% SDS-PAGE, and the membrane was blotted with PI3 kinase p85 (phospho Tyr467)/p55 (phospho Tyr199) antibody (GTX132597) diluted at 1:500. The HRP-conjugated anti-rabbit IgG antibody (GTX213110-01) was used to detect the primary antibody, and the signal was developed with Trident ECL plus-Enhanced.

**GTX132597 WB Image**

Untreated (-) and treated (+) Raw264.7 whole cell extracts (30 μg) were separated by 7.5% SDS-PAGE, and the membrane was blotted with PI3 kinase p85 (phospho Tyr467)/p55 (phospho Tyr199) antibody (GTX132597) diluted at 1:500. The HRP-conjugated anti-rabbit IgG antibody (GTX213110-01) was used to detect the primary antibody, and the signal was developed with Trident ECL plus-Enhanced.

**GTX132597 WB Image**

Untreated (-) and treated (+) HepG2 whole cell extracts (30 μg) were separated by 7.5% SDS-PAGE, and the membrane was blotted with PI3 kinase p85 (phospho Tyr467)/p55 (phospho Tyr199) antibody (GTX132597) diluted at 1:500. The HRP-conjugated anti-rabbit IgG antibody (GTX213110-01) was used to detect the primary antibody.



For full product information, images and publications, please visit our [website](#).