

## AKT (phospho Ser473) antibody

Cat. No. GTX132615

|             |                   |
|-------------|-------------------|
| Host        | Rabbit            |
| Clonality   | Polyclonal        |
| Isotype     | IgG               |
| Application | WB                |
| Reactivity  | Human, Mouse, Rat |

Package  
100 µl, 25 µl

## APPLICATION

## Application Note

\*Optimal dilutions/concentrations should be determined by the researcher.

| Suggested dilution | Recommended dilution |
|--------------------|----------------------|
| WB                 | 1:500-1:3000         |

Not tested in other applications.

Calculated MW 56 kDa. ( [Note](#) )

**Product Note** This antibody is raised against human AKT1 phosphorylated at Ser473. Based on sequence homology, it is predicted to react with AKT2 and AKT3 when phosphorylated at the corresponding residues - AKT2 Ser474 and AKT3 Ser472.

## PROPERTIES

|               |  |
|---------------|--|
| Form          | Liquid   |
| Buffer        | PBS, 1% BSA, 20% Glycerol  |
| Preservative  | 0.025% ProClin 300   |
| Storage       | Store as concentrated solution. Centrifuge briefly prior to opening vial. For short-term storage (1-2 weeks), store at 4°C. For long-term storage, aliquot and store at -20°C or below. Avoid multiple freeze-thaw cycles. |
| Concentration | 0.31 mg/ml (Please refer to the vial label for the specific concentration.)  |
| Immunogen     | Carrier-protein conjugated synthetic peptide surrounding phospho Ser473 of human AKT. The exact sequence is proprietary.   |
| Purification  | Purified by antigen-affinity chromatography.   |
| Conjugation   | Unconjugated   |

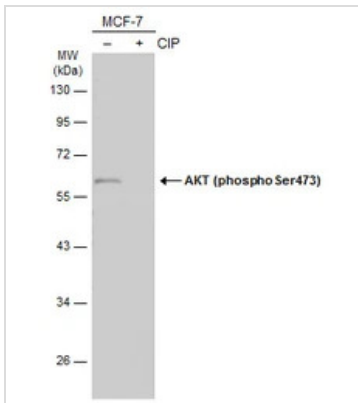
## Note

For laboratory research use only. Not for any clinical, therapeutic, or diagnostic use in humans or animals. Not for animal or human consumption.

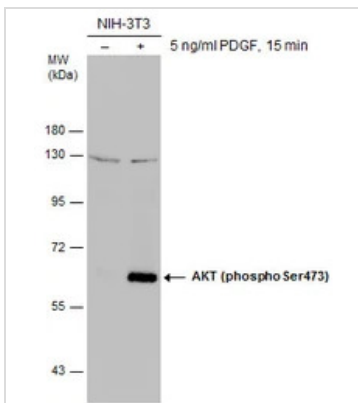
Purchasers shall not, and agree not to enable third parties to, analyze, copy, reverse engineer or otherwise attempt to determine the structure or sequence of the product.



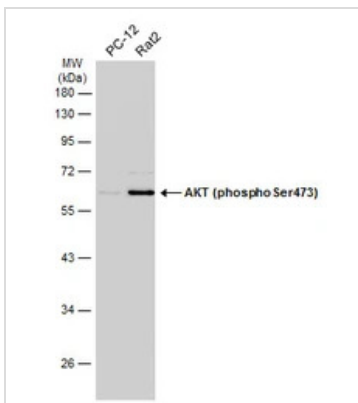
For full product information, images and publications, please visit our [website](#).

**DATA IMAGES**

**GTX132615 WB Image**

Untreated (-) and treated (+) MCF-7 whole cell extracts (30 µg) were separated by 10% SDS-PAGE, and the membrane was blotted with AKT (phospho Ser473) antibody (GTX132615) diluted at 1:1000. The HRP-conjugated anti-rabbit IgG antibody (GTX213110-01) was used to detect the primary antibody.


**GTX132615 WB Image**

Untreated (-) and treated (+) NIH-3T3 whole cell extracts (30 µg) were separated by 7.5% SDS-PAGE, and the membrane was blotted with AKT (phospho Ser473) antibody (GTX132615) diluted at 1:1000.


**GTX132615 WB Image**

Various whole cell extracts (30 µg) were separated by 10% SDS-PAGE, and the membrane was blotted with AKT (phospho Ser473) antibody (GTX132615) diluted at 1:500. The HRP-conjugated anti-rabbit IgG antibody (GTX213110-01) was used to detect the primary antibody.



For full product information, images and publications, please visit our [website](https://www.genetex.com).