

Streptavidin antibody (HRP)

Cat. No. GTX132626-01

Host	Rabbit
Clonality	Polyclonal
Isotype	IgG
Applications	WB, ELISA
Reactivity	Streptomyces avidinii

[References \(3 \)](#)
Package

100 µl, 25 µl

Applications

Application Note

*Optimal dilutions/concentrations should be determined by the researcher.

Suggested dilution	Recommended dilution
WB	Assay dependent
ELISA	1:1000-1:10000

Not tested in other applications.

Properties

Form	Liquid
Buffer	0.05M Tris, 0.15M NaCl, 1%BSA
Preservative	0.025% ProClin 300
Storage	Store as concentrated solution. Centrifuge briefly prior to opening vial. For short-term storage (1-2 weeks), store at 4°C. For long-term storage, aliquot and store at -20°C or below. Avoid multiple freeze-thaw cycles.
Concentration	1 mg/ml (Please refer to the vial label for the specific concentration.)
Immunogen	The immunogen used to generate this antibody corresponds to Streptavidin.
Purification	Purified by antigen-affinity chromatography.
Conjugation	Horseradish peroxidase(HRP)

Note

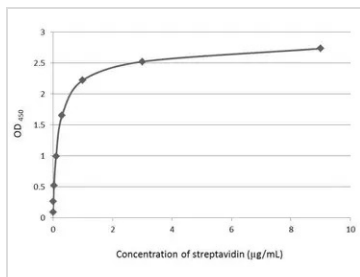
For laboratory research use only. Not for any clinical, therapeutic, or diagnostic use in humans or animals. Not for animal or human consumption.

Purchasers shall not, and agree not to enable third parties to, analyze, copy, reverse engineer or otherwise attempt to determine the structure or sequence of the product.



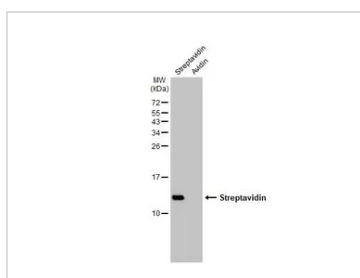
For full product information, images and publications, please visit our [website](#).

DATA IMAGES



GTX132626-01 ELISA Image

An ELISA plate is coated with 50 µL of Streptavidin recombinant protein at concentration ranged from 0.03 µg/mL to 9 µg/mL. The coated protein is detected with HRP-conjugated anti-Streptavidin antibody (GTX132626-01) at 0.5 µg/mL.



GTX132626-01 WB Image

Streptavidin (0.5 µg) were separated by 15% SDS-PAGE, and the membrane was blotted with Streptavidin antibody (GTX132626-01) diluted at 1:10000.



For full product information, images and publications, please visit our [website](https://www.genetex.com).