

pan Cadherin antibody

Cat. No. GTX132646

Host	Rabbit
Clonality	Polyclonal
Isotype	IgG
Applications	WB, ICC/IF, FCM
Reactivity	Human, Mouse

References (5)

★★★★★ Review (1)

Package

100 µl, 25 µl

Applications

Application Note

*Optimal dilutions/concentrations should be determined by the researcher.

Suggested dilution	Recommended dilution
WB	1:1000-1:10000
ICC/IF	1:100-1:1000
FCM	Assay dependent

Not tested in other applications.

Calculated MW 100 kDa. ([Note](#))

Properties

Form	Liquid
Buffer	PBS, 20% Glycerol
Preservative	0.025% ProClin 300
Storage	Store as concentrated solution. Centrifuge briefly prior to opening vial. For short-term storage (1-2 weeks), store at 4°C. For long-term storage, aliquot and store at -20°C or below. Avoid multiple freeze-thaw cycles.
Concentration	0.81 mg/ml (Please refer to the vial label for the specific concentration.)
Immunogen	Carrier-protein conjugated synthetic peptide encompassing a sequence within the C-terminus region of human pan Cadherin. The exact sequence is proprietary.
Purification	Purified by antigen-affinity chromatography.
Conjugation	Unconjugated

Note

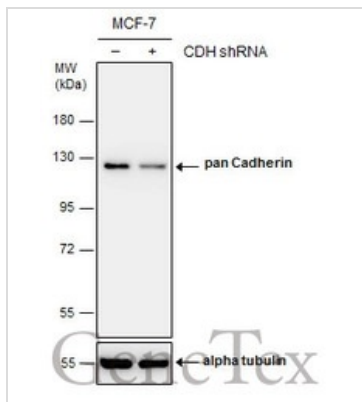
For laboratory research use only. Not for any clinical, therapeutic, or diagnostic use in humans or animals. Not for animal or human consumption.

Purchasers shall not, and agree not to enable third parties to, analyze, copy, reverse engineer or otherwise attempt to determine the structure or sequence of the product.



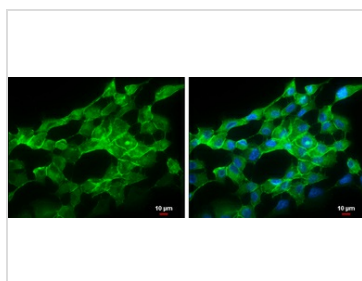
For full product information, images and publications, please visit our [website](#).

DATA IMAGES



GTX132646 WB Image

Non-transfected (–) and transfected (+) MCF-7 whole cell extracts (30 µg) were separated by 7.5% SDS-PAGE, and the membrane was blotted with pan Cadherin antibody (GTX132646) diluted at 1:4000.



GTX132646 ICC/IF Image

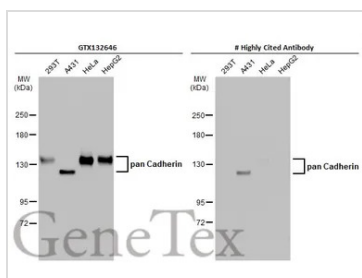
pan Cadherin antibody detects pan Cadherin protein at cell membrane by immunofluorescent analysis.

Sample: SK-N-AS cells were fixed in ice-cold MeOH for 5 min.

Green: pan Cadherin protein stained by pan Cadherin antibody (GTX132646) diluted at 1:500.

Blue: Hoechst 33342 staining.

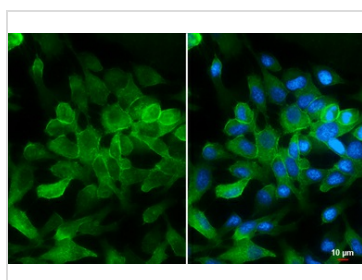
Scale bar = 10 µm.



GTX132646 WB Image

Various whole cell extracts (30 µg) were separated by 5% SDS-PAGE, and the membranes were blotted with pan Cadherin antibody (GTX132646) diluted at 1:1000 and competitor's antibody diluted at 1:1000. The HRP-conjugated anti-rabbit IgG antibody (GTX213110-01) was used to detect the primary antibody.

*The competitor is not affiliated with GeneTex and does not endorse this product.



GTX132646 ICC/IF Image

pan Cadherin antibody detects pan Cadherin protein at cell membrane by immunofluorescent analysis.

Sample: HeLa cells were fixed in ice-cold MeOH for 5 min.

Green: pan Cadherin stained by pan Cadherin antibody (GTX132646) diluted at 1:1000.

Blue: Hoechst 33342 staining.

Scale bar= 10 µm.



For full product information, images and publications, please visit our [website](https://www.genetex.com).