

IL21 Receptor antibody

Cat. No. GTX13268

Host	Rabbit
Clonality	Polyclonal
Isotype	IgG
Applications	FCM, ELISA, IHC
Reactivity	Mouse

Package
50 µg

Applications

Application Note

*Optimal dilutions/concentrations should be determined by the researcher.

Suggested dilution	Recommended dilution
FCM	1:20
ELISA	1:100,000
IHC	1:300

Not tested in other applications.

Properties

Form	Liquid
Buffer	10mM KHPO ₄ , 140mM NaCl, 0.1% BSA
Preservative	0.1% Sodium azide
Storage	Store as concentrated solution. Centrifuge briefly prior to opening vial. For short-term storage (1-2 weeks), store at 4°C. For long-term storage, aliquot and store at -20°C or below. Avoid multiple freeze-thaw cycles.
Concentration	1 mg/ml (Please refer to the vial label for the specific concentration.)
Immunogen	Synthetic peptide CVLETRSPNPSILSLTWQDEYEELQDQETF corresponding to 35-65 residues of N-terminus of mouse IL-21 receptor
Purification	Purified by affinity chromatography
Conjugation	Unconjugated

Note

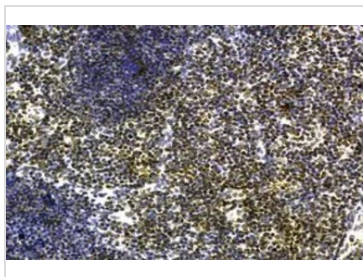
For laboratory research use only. Not for any clinical, therapeutic, or diagnostic use in humans or animals. Not for animal or human consumption.

Purchasers shall not, and agree not to enable third parties to, analyze, copy, reverse engineer or otherwise attempt to determine the structure or sequence of the product.



For full product information, images and publications, please visit our [website](#).

DATA IMAGES



GTX13268 IHC Image

IHC analysis of mouse thymus tissue using GTX13268 IL21 Receptor antibody.



For full product information, images and publications, please visit our [website](#).