

Osteocalcin antibody

Cat. No. GTX132703

Host	Rabbit
Clonality	Polyclonal
Isotype	IgG
Application	WB, ELISA
Reactivity	Human

Package
100 µl, 25 µl

APPLICATION

Application Note

*Optimal dilutions/concentrations should be determined by the researcher.

Suggested dilution	Recommended dilution
WB	1:1000-1:10000
ELISA	1:1000-1:10000

Not tested in other applications.

Calculated MW 11 kDa. ([Note](#))

PROPERTIES

Form	Liquid
Buffer	PBS, 20% Glycerol
Preservative	0.025% ProClin 300
Storage	Store as concentrated solution. Centrifuge briefly prior to opening vial. For short-term storage (1-2 weeks), store at 4°C. For long-term storage, aliquot and store at -20°C or below. Avoid multiple freeze-thaw cycles.
Concentration	0.69 mg/ml (Please refer to the vial label for the specific concentration.)
Immunogen	Recombinant protein encompassing a sequence within the Center region of human Osteocalcin. The exact sequence is proprietary.
Purification	Purified by antigen-affinity chromatography.
Conjugation	Unconjugated

Note

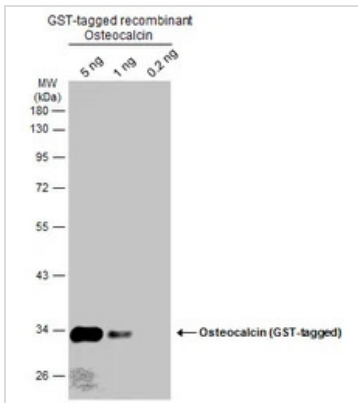
For laboratory research use only. Not for any clinical, therapeutic, or diagnostic use in humans or animals. Not for animal or human consumption.

Purchasers shall not, and agree not to enable third parties to, analyze, copy, reverse engineer or otherwise attempt to determine the structure or sequence of the product.



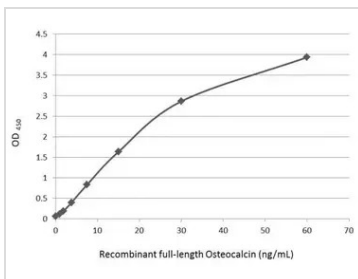
For full product information, images and publications, please visit our [website](#).

DATA IMAGES



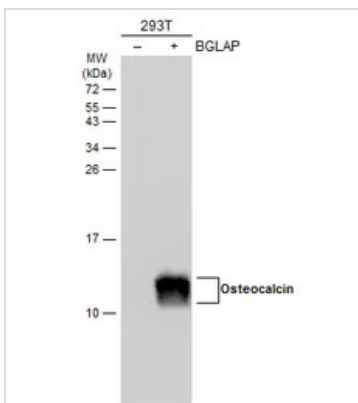
GTX132703 WB Image

Recombinant Osteocalcin were separated by 10% SDS-PAGE, and the membrane was blotted with Osteocalcin antibody (GTX132703) diluted at 1:1000. The HRP-conjugated anti-rabbit IgG antibody (GTX213110-01) was used to detect the primary antibody.



GTX132703 ELISA Image

Indirect ELISA analysis was performed by coating plate with 50 μ L of recombinant full-length Osteocalcin protein at concentrations ranging from 0.938 ng/mL to 60 ng/mL. The coated protein is detected with Osteocalcin antibody (GTX132703) at 1 μ g/mL.



GTX132703 WB Image

Non-transfected (-) and transfected (+) 293T whole cell extracts (30 μ g) were separated by 15% SDS-PAGE, and the membrane was blotted with Osteocalcin antibody (GTX132703) diluted at 1:5000. The HRP-conjugated anti-rabbit IgG antibody (GTX213110-01) was used to detect the primary antibody.



For full product information, images and publications, please visit our [website](https://www.genetex.com).