

## P2Y1 antibody

**Cat. No. GTX13271**

<b>Host</b>	Rabbit
<b>Clonality</b>	Polyclonal
<b>Isotype</b>	IgG
<b>Application</b>	IHC-P
<b>Reactivity</b>	Human, Bat

**Package**

25 µg

### APPLICATION

#### Application Note

\*Optimal dilutions/concentrations should be determined by the researcher.

Suggested dilution	Recommended dilution
IHC-P	2.5 µg/ml
Not tested in other applications.	

**Calculated MW** 42 kDa. ( [Note](#) )

### PROPERTIES

<b>Form</b>	Liquid
<b>Buffer</b>	PBS
<b>Preservative</b>	0.1% Sodium azide
<b>Storage</b>	Store as concentrated solution. Centrifuge briefly prior to opening vial. For short-term storage (1-2 weeks), store at 4°C. For long-term storage, aliquot and store at -20°C or below. Avoid multiple freeze-thaw cycles.
<b>Concentration</b>	1 mg/ml (Please refer to the vial label for the specific concentration.)
<b>Immunogen</b>	Synthetic 15 amino acid peptide from 2nd extracellular domain of human P2RY1 / P2Y1.
<b>Purification</b>	Purified by affinity chromatography
<b>Conjugation</b>	Unconjugated

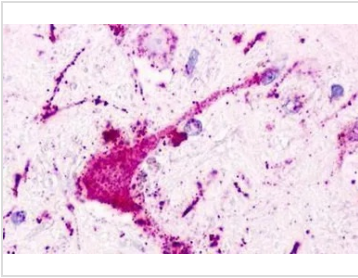
#### Note

For laboratory research use only. Not for any clinical, therapeutic, or diagnostic use in humans or animals. Not for animal or human consumption.

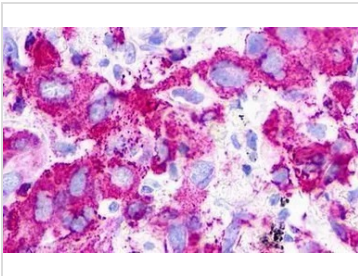
Purchasers shall not, and agree not to enable third parties to, analyze, copy, reverse engineer or otherwise attempt to determine the structure or sequence of the product.



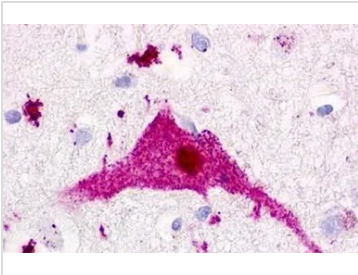
For full product information, images and publications, please visit our [website](#).

**DATA IMAGES**

**GTX13271 IHC-P Image**

IHC-P analysis of human brain, neurons and glia tissue using GTX13271 P2Y1 antibody.  
Antigen retrieval : Heat-induced antigen retrieval


**GTX13271 IHC-P Image**

IHC-P analysis of lung, adenocarcinoma tissue using GTX13271 P2Y1 antibody.


**GTX13271 IHC-P Image**

IHC-P analysis of brain, cortex, neuron tissue using GTX13271 P2Y1 antibody.



For full product information, images and publications, please visit our [website](#).