

## OLIG2 antibody

Cat. No. GTX132732

Host	Rabbit
Clonality	Polyclonal
Isotype	IgG
Applications	WB, ICC/IF, IHC-P, IHC-Fr
Reactivity	Human, Mouse, Rat, Pig

References ( 8 )

★★★★★ Review ( 1 )

Package

100 µl, 25 µl

## Applications

## Application Note

\*Optimal dilutions/concentrations should be determined by the researcher.

Suggested dilution	Recommended dilution
WB	1:500-1:3000
ICC/IF	1:100-1:1000
IHC-P	Assay dependent
IHC-Fr	Assay dependent

Not tested in other applications.

Calculated MW 32 kDa. ( [Note](#) )

## Properties

Form	Liquid
Buffer	PBS, 20% Glycerol
Preservative	0.025% ProClin 300
Storage	Store as concentrated solution. Centrifuge briefly prior to opening vial. For short-term storage (1-2 weeks), store at 4°C. For long-term storage, aliquot and store at -20°C or below. Avoid multiple freeze-thaw cycles.
Concentration	1 mg/ml (Please refer to the vial label for the specific concentration.)
Immunogen	Recombinant protein encompassing a sequence within the N-terminus region of human OLIG2. The exact sequence is proprietary.
Purification	Purified by antigen-affinity chromatography.
Conjugation	Unconjugated

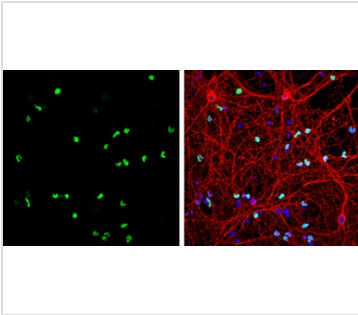
For full product information, images and publications, please visit our [website](#).

Date 2025 / 07 / 01 Page 1 of 2

For laboratory research use only. Not for any clinical, therapeutic, or diagnostic use in humans or animals. Not for animal or human consumption.

**Note**

Purchasers shall not, and agree not to enable third parties to, analyze, copy, reverse engineer or otherwise attempt to determine the structure or sequence of the product.

**DATA IMAGES**

**GTX132732 ICC/IF Image**

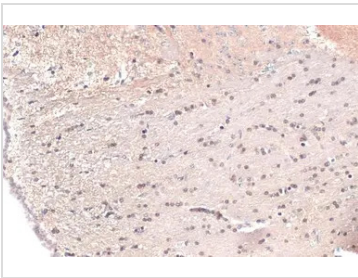
OLIG2 antibody detects OLIG2 protein by immunofluorescent analysis.

Sample: DIV9 rat E18 primary cortical neurons and glia cells were fixed in 4% paraformaldehyde at RT for 15 min.

Green: OLIG2 protein stained by OLIG2 antibody (GTX132732) diluted at 1:500.

Red: beta Tubulin 3/ Tuj1, stained by beta Tubulin 3/ Tuj1 antibody [GT886] (GTX631830) diluted at 1:500.

Blue: Fluoroshield with DAPI (GTX30920).

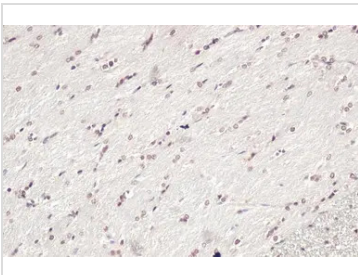

**GTX132732 IHC-P Image**

OLIG2 antibody detects OLIG2 protein at nucleus by immunohistochemical analysis.

Sample: Paraffin-embedded mouse brain.

OLIG2 stained by OLIG2 antibody (GTX132732) diluted at 1:500.

Antigen Retrieval: Citrate buffer, pH 6.0, 15 min

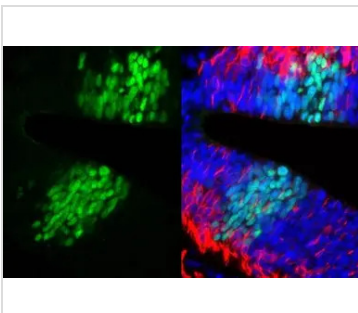

**GTX132732 IHC-P Image**

OLIG2 antibody detects OLIG2 protein at nucleus by immunohistochemical analysis.

Sample: Paraffin-embedded rat brain.

OLIG2 stained by OLIG2 antibody (GTX132732) diluted at 1:500.

Antigen Retrieval: Citrate buffer, pH 6.0, 15 min


**GTX132732 IHC-P Image**

OLIG2 antibody detects OLIG2 protein by immunohistochemical analysis.

Sample: Paraffin-embedded mouse E10.5 embryo.

Green: OLIG2 stained by OLIG2 antibody (GTX132732) diluted at 1:500.

Red: beta Tubulin 3/ Tuj1, a Cytoskeleton marker, stained by beta Tubulin 3/ Tuj1 antibody [GT11710] (GTX631836) diluted at 1:500.

Blue: Fluoroshield with DAPI (GTX30920).

Antigen Retrieval: Citrate buffer, pH 6.0, 15 min



For full product information, images and publications, please visit our [website](https://www.genetex.com).