

OLIG2 antibody

Cat. No. GTX132732

Host	Rabbit
Clonality	Polyclonal
Isotype	IgG
Applications	WB, ICC/IF, IHC-P, IHC-Fr
Reactivity	Human, Mouse, Rat, Pig

References (8)

★★★★★ Review (1)

Package

100 µl, 25 µl

Applications

Application Note

*Optimal dilutions/concentrations should be determined by the researcher.

Suggested dilution	Recommended dilution
WB	1:500-1:3000
ICC/IF	1:100-1:1000
IHC-P	Assay dependent
IHC-Fr	Assay dependent

Not tested in other applications.

Calculated MW 32 kDa. ([Note](#))

Properties

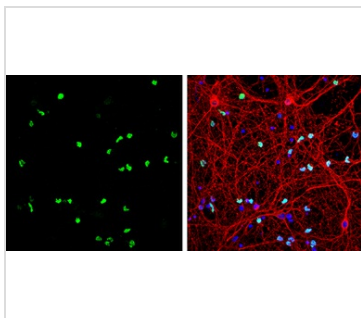
Form	Liquid
Buffer	PBS, 20% Glycerol
Preservative	0.025% ProClin 300
Storage	Store as concentrated solution. Centrifuge briefly prior to opening vial. For short-term storage (1-2 weeks), store at 4°C. For long-term storage, aliquot and store at -20°C or below. Avoid multiple freeze-thaw cycles.
Concentration	1 mg/ml (Please refer to the vial label for the specific concentration.)
Immunogen	Recombinant protein encompassing a sequence within the N-terminus region of human OLIG2. The exact sequence is proprietary.
Purification	Purified by antigen-affinity chromatography.
Conjugation	Unconjugated

For full product information, images and publications, please visit our [website](#).

For laboratory research use only. Not for any clinical, therapeutic, or diagnostic use in humans or animals. Not for animal or human consumption.

Note

Purchasers shall not, and agree not to enable third parties to, analyze, copy, reverse engineer or otherwise attempt to determine the structure or sequence of the product.

DATA IMAGES

GTX132732 ICC/IF Image

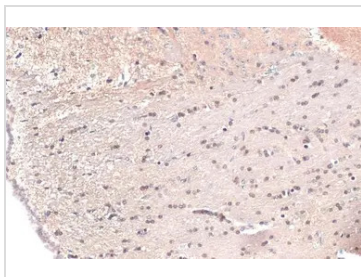
OLIG2 antibody detects OLIG2 protein by immunofluorescent analysis.

Sample: DIV9 rat E18 primary cortical neurons and glia cells were fixed in 4% paraformaldehyde at RT for 15 min.

Green: OLIG2 protein stained by OLIG2 antibody (GTX132732) diluted at 1:500.

Red: beta Tubulin 3/ Tuj1, stained by beta Tubulin 3/ Tuj1 antibody [GT886] (GTX631830) diluted at 1:500.

Blue: Fluoroshield with DAPI (GTX30920).

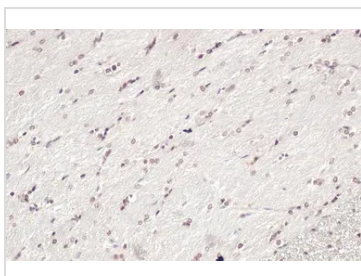

GTX132732 IHC-P Image

OLIG2 antibody detects OLIG2 protein at nucleus by immunohistochemical analysis.

Sample: Paraffin-embedded mouse brain.

OLIG2 stained by OLIG2 antibody (GTX132732) diluted at 1:500.

Antigen Retrieval: Citrate buffer, pH 6.0, 15 min

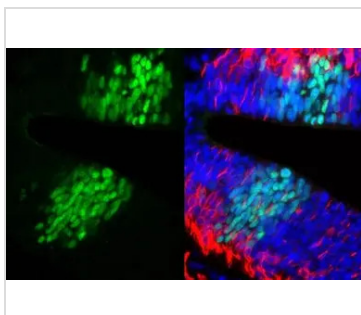

GTX132732 IHC-P Image

OLIG2 antibody detects OLIG2 protein at nucleus by immunohistochemical analysis.

Sample: Paraffin-embedded rat brain.

OLIG2 stained by OLIG2 antibody (GTX132732) diluted at 1:500.

Antigen Retrieval: Citrate buffer, pH 6.0, 15 min


GTX132732 IHC-P Image

OLIG2 antibody detects OLIG2 protein by immunohistochemical analysis.

Sample: Paraffin-embedded mouse E10.5 embryo.

Green: OLIG2 stained by OLIG2 antibody (GTX132732) diluted at 1:500.

Red: beta Tubulin 3/ Tuj1, a Cytoskeleton marker, stained by beta Tubulin 3/ Tuj1 antibody [GT11710] (GTX631836) diluted at 1:500.

Blue: Fluoroshield with DAPI (GTX30920).

Antigen Retrieval: Citrate buffer, pH 6.0, 15 min



For full product information, images and publications, please visit our [website](https://www.genetex.com).