

Lipocalin-2 antibody

Cat. No. GTX132773

| | |
|-------------|------------|
| Host | Rabbit |
| Clonality | Polyclonal |
| Isotype | IgG |
| Application | WB, IHC-P |
| Reactivity | Human |

Package
100 µl, 25 µl

APPLICATION

Application Note

*Optimal dilutions/concentrations should be determined by the researcher.

| Suggested dilution | Recommended dilution |
|--------------------|----------------------|
| WB | 1:500-1:3000 |
| IHC-P | Assay dependent |

Not tested in other applications.

Calculated MW 23 kDa. ([Note](#))

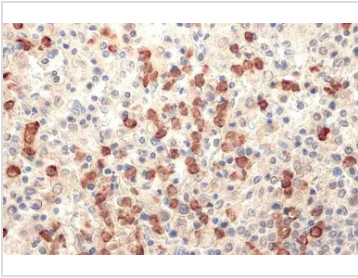
PROPERTIES

| | |
|---------------|--|
| Form | Liquid |
| Buffer | PBS, 20% Glycerol |
| Preservative | 0.025% ProClin 300 |
| Storage | Store as concentrated solution. Centrifuge briefly prior to opening vial. For short-term storage (1-2 weeks), store at 4°C. For long-term storage, aliquot and store at -20°C or below. Avoid multiple freeze-thaw cycles. |
| Concentration | 2.03 mg/ml (Please refer to the vial label for the specific concentration.) |
| Immunogen | Recombinant protein encompassing a sequence within the center region of human Lipocalin-2. The exact sequence is proprietary. |
| Purification | Purified by antigen-affinity chromatography. |
| Conjugation | Unconjugated |
| Note | For laboratory use only. Not for any clinical, therapeutic, or diagnostic use in humans or animals. Not for animal or human consumption. |



For full product information, images and publications, please visit our [website](#).

DATA IMAGES



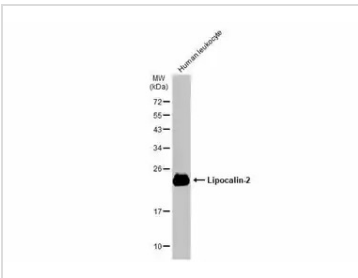
GTX132773 IHC-P Image

Lipocalin-2 antibody detects Lipocalin-2 protein at cytoplasm by immunohistochemical analysis.

Sample: Paraffin-embedded human spleen.

Lipocalin-2 stained by Lipocalin-2 antibody (GTX132773) diluted at 1:500.

Antigen Retrieval: Citrate buffer, pH 6.0, 15 min



GTX132773 WB Image

Whole cell extract (30 µg) was separated by 12% SDS-PAGE, and the membrane was blotted with Lipocalin-2 antibody (GTX132773) diluted at 1:1000. The HRP-conjugated anti-rabbit IgG antibody (GTX213110-01) was used to detect the primary antibody.



For full product information, images and publications, please visit our [website](#).