

ERK1 (phospho Thr202/Tyr204) + ERK2 (phospho Thr185/Tyr187) antibody

Cat. No. GTX132783

Host	Rabbit
Clonality	Polyclonal
Isotype	IgG
Application	WB
Reactivity	Human, Mouse

Package

100 µl, 25 µl

APPLICATION

Application Note

*Optimal dilutions/concentrations should be determined by the researcher.

Suggested dilution	Recommended dilution
WB	1:1000

Not tested in other applications.

PROPERTIES

Form	Liquid
Buffer	PBS, 1% BSA, 20% Glycerol
Preservative	0.025% ProClin 300
Storage	Store as concentrated solution. Centrifuge briefly prior to opening vial. For short-term storage (1-2 weeks), store at 4°C. For long-term storage, aliquot and store at -20°C or below. Avoid multiple freeze-thaw cycles.
Concentration	1.73 mg/ml (Please refer to the vial label for the specific concentration.)
Immunogen	Carrier-protein conjugated synthetic peptide surrounding phospho Thr202/Tyr204 of human ERK1. The exact sequence is proprietary.
Purification	Purified by antigen-affinity chromatography.
Conjugation	Unconjugated

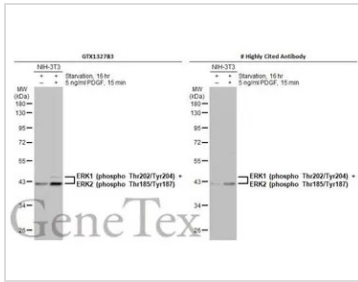
Note

For laboratory research use only. Not for any clinical, therapeutic, or diagnostic use in humans or animals. Not for animal or human consumption.

Purchasers shall not, and agree not to enable third parties to, analyze, copy, reverse engineer or otherwise attempt to determine the structure or sequence of the product.

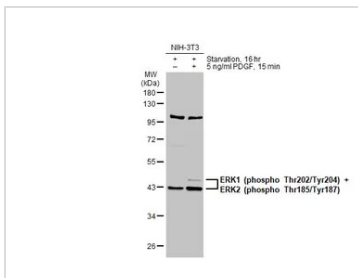


For full product information, images and publications, please visit our [website](#).

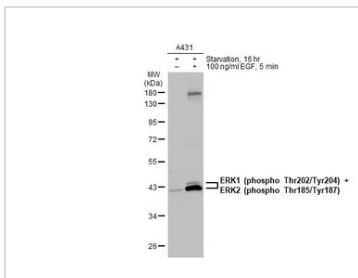
DATA IMAGES

GTX132783 WB Image

Untreated (–) and treated (+) NIH-3T3 whole cell extracts (30 µg) were separated by 10% SDS-PAGE, and the membranes were blotted with ERK1 (phospho Thr202/Tyr204) / ERK2 (phospho Thr185/Tyr187) antibody (GTX132783) diluted at 1:500 and competitor's antibody diluted at 1:500. The HRP-conjugated anti-rabbit IgG antibody (GTX213110-01) was used to detect the primary antibody.

*The competitor is not affiliated with GeneTex and does not endorse this product.


GTX132783 WB Image

Untreated (–) and treated (+) NIH-3T3 whole cell extracts (30 µg) were separated by 10% SDS-PAGE, and the membrane was blotted with ERK1 (phospho Thr202/Tyr204) / ERK2 (phospho Thr185/Tyr187) antibody (GTX132783) diluted at 1:500. The HRP-conjugated anti-rabbit IgG antibody (GTX213110-01) was used to detect the primary antibody.


GTX132783 WB Image

Untreated (–) and treated (+) A431 whole cell extracts (30 µg) were separated by 10% SDS-PAGE, and the membrane was blotted with ERK1 (phospho Thr202/Tyr204) / ERK2 (phospho Thr185/Tyr187) antibody (GTX132783) diluted at 1:500. The HRP-conjugated anti-rabbit IgG antibody (GTX213110-01) was used to detect the primary antibody.



For full product information, images and publications, please visit our [website](https://www.genetex.com).