

PDCD4 (phospho Ser457) antibody

Cat. No. GTX132798

Host	Rabbit
Clonality	Polyclonal
Isotype	IgG
Applications	WB, IHC-P
Reactivity	Mouse, Rat

Package
100 µl, 25 µl

Applications

Application Note

*Optimal dilutions/concentrations should be determined by the researcher.

Suggested dilution	Recommended dilution
WB	1:500-1:3000
IHC-P	1:100-1:1000

Not tested in other applications.

Calculated MW 52 kDa. ([Note](#))

Properties

Form Liquid

Buffer PBS, 1% BSA, 20% Glycerol

Preservative 0.025% ProClin 300

Storage Store as concentrated solution. Centrifuge briefly prior to opening vial. For short-term storage (1-2 weeks), store at 4°C. For long-term storage, aliquot and store at -20°C or below. Avoid multiple freeze-thaw cycles.

Concentration 2.03 mg/ml (Please refer to the vial label for the specific concentration.)

Immunogen Carrier-protein conjugated synthetic peptide surrounding phospho Ser457 of human PDCD4. The exact sequence is proprietary.

Purification Purified by antigen-affinity chromatography.

Conjugation Unconjugated

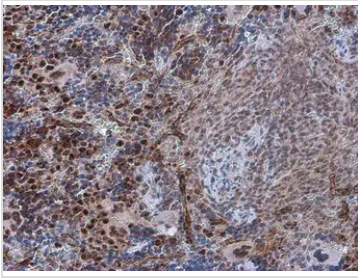
Note For laboratory research use only. Not for any clinical, therapeutic, or diagnostic use in humans or animals. Not for animal or human consumption.

Purchasers shall not, and agree not to enable third parties to, analyze, copy, reverse engineer or otherwise attempt to determine the structure or sequence of the product.



For full product information, images and publications, please visit our [website](#).

DATA IMAGES

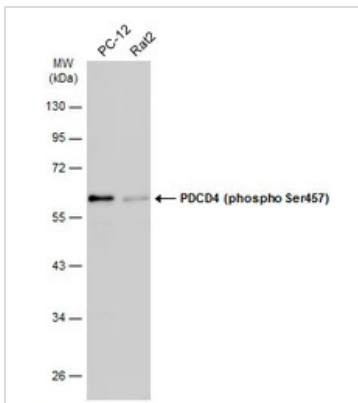
**GTX132798 IHC-P Image**

PDCD4 (phospho Ser457) antibody detects PDCD4 (phospho Ser457) protein at nucleus in mouse spleen by immunohistochemical analysis.

Sample: Paraffin-embedded mouse spleen.

PDCD4 (phospho Ser457) antibody (GTX132798) diluted at 1:500.

Antigen Retrieval: Citrate buffer, pH 6.0, 15 min

**GTX132798 WB Image**

Various whole cell extracts (30 µg) were separated by 10% SDS-PAGE, and the membrane was blotted with PDCD4 (phospho Ser457) antibody (GTX132798) diluted at 1:500. The HRP-conjugated anti-rabbit IgG antibody (GTX213110-01) was used to detect the primary antibody.

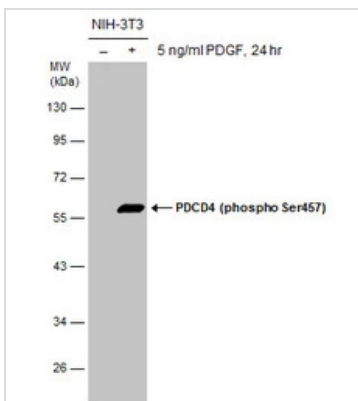
**GTX132798 IHC-P Image**

PDCD4 (phospho Ser457) antibody detects PDCD4 (phospho Ser457) protein at nucleus in rat intestine by immunohistochemical analysis.

Sample: Paraffin-embedded rat intestine.

PDCD4 (phospho Ser457) antibody (GTX132798) diluted at 1:500.

Antigen Retrieval: Citrate buffer, pH 6.0, 15 min

**GTX132798 WB Image**

Untreated (-) and treated (+) NIH-3T3 whole cell extracts (30 µg) were separated by 10% SDS-PAGE, and the membrane was blotted with PDCD4 (phospho Ser457) antibody (GTX132798) diluted at 1:1000.



For full product information, images and publications, please visit our [website](http://www.genetex.com).