

mTOR (phospho Ser2448) antibody

Cat. No. GTX132803

Host	Rabbit
Clonality	Polyclonal
Isotype	IgG
Applications	WB, ICC/IF, IHC-P
Reactivity	Human, Mouse, Rat

References (23)

Package

100 µl, 25 µl

Applications

Application Note

*Optimal dilutions/concentrations should be determined by the researcher.

Suggested dilution	Recommended dilution
WB	1:500-1:3000
ICC/IF	Assay dependent
IHC-P	1:100-1:1000

Not tested in other applications.

Calculated MW 289 kDa. ([Note](#))

Properties

Form	Liquid
Buffer	PBS, 1% BSA, 20% Glycerol
Preservative	0.025% ProClin 300
Storage	Store as concentrated solution. Centrifuge briefly prior to opening vial. For short-term storage (1-2 weeks), store at 4°C. For long-term storage, aliquot and store at -20°C or below. Avoid multiple freeze-thaw cycles.
Concentration	0.33 mg/ml (Please refer to the vial label for the specific concentration.)
Immunogen	Carrier-protein conjugated synthetic peptide surrounding phospho Ser2448 of human mTOR. The exact sequence is proprietary.
Purification	Purified by antigen-affinity chromatography.
Conjugation	Unconjugated

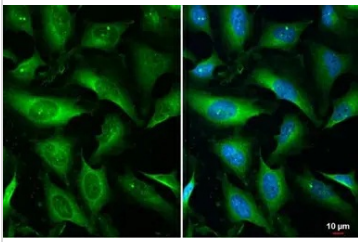
Note

For laboratory research use only. Not for any clinical, therapeutic, or diagnostic use in humans or animals. Not for animal or human consumption.

Purchasers shall not, and agree not to enable third parties to, analyze, copy, reverse engineer or otherwise attempt to determine the structure or sequence of the product.



For full product information, images and publications, please visit our [website](#).

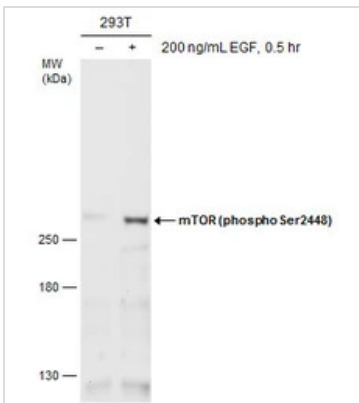
DATA IMAGES

GTX132803 ICC/IF Image

mTOR (phospho Ser2448) antibody detects mTOR (phospho Ser2448) protein at cytoplasm by immunofluorescent analysis.

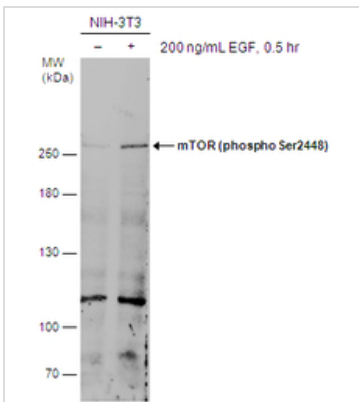
Sample: HeLa cells were fixed in 4% paraformaldehyde at RT for 15 min.

Green: mTOR (phospho Ser2448) stained by mTOR (phospho Ser2448) antibody (GTX132803) diluted at 1:500.

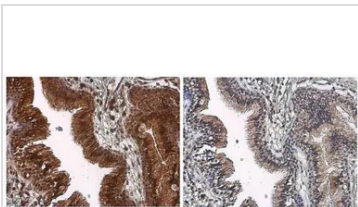
Blue: Fluoroshield with DAPI (GTX30920).


GTX132803 WB Image

Untreated (-) and treated (+) 293T whole cell extracts (60 µg) were separated by 5% SDS-PAGE, and the membrane was blotted with mTOR (phospho Ser2448) antibody (GTX132803) diluted at 1:1000.


GTX132803 WB Image

Untreated (-) and treated (+) NIH-3T3 whole cell extracts (30 µg) were separated by 5% SDS-PAGE, and the membrane was blotted with mTOR (phospho Ser2448) antibody (GTX132803) diluted at 1:1000. The signal was developed with Trident ECL plus-Enhanced.


GTX132803 IHC-P Image

mTOR (phospho Ser2448) antibody detects mTOR (phospho Ser2448) protein at cytoplasm by immunohistochemical analysis in the presence of control peptide (left) or antigen-specific peptide (right).

Sample: Paraffin-embedded human lung cancer.

mTOR (phospho Ser2448) stained by mTOR (phospho Ser2448) antibody (GTX132803) diluted at 1:500.

Antigen Retrieval: Citrate buffer, pH 6.0, 15 min



For full product information, images and publications, please visit our [website](https://www.genetex.com).