

EGFR (phospho Tyr1068) antibody

Cat. No. GTX132810

Host	Rabbit
Clonality	Polyclonal
Isotype	IgG
Applications	WB, ICC/IF, IHC-P
Reactivity	Human, Mouse, Rat

References (13)

Package

100 µl, 25 µl

Applications

Application Note

*Optimal dilutions/concentrations should be determined by the researcher.

Suggested dilution	Recommended dilution
WB	1:500-1:3000
ICC/IF	1:100-1:1000
IHC-P	1:100-1:1000

Not tested in other applications.

Calculated MW 134 kDa. ([Note](#))**Product Note**

The full-length EGFR includes the 24 aa signal peptide that is cleaved during EGFR maturation. The Tyr1068 of mature EGFR is equivalent to Tyr1092 of uncleaved EGFR.

Properties

Form	Liquid
Buffer	PBS, 1% BSA, 20% Glycerol
Preservative	0.025% ProClin 300
Storage	Store as concentrated solution. Centrifuge briefly prior to opening vial. For short-term storage (1-2 weeks), store at 4°C. For long-term storage, aliquot and store at -20°C or below. Avoid multiple freeze-thaw cycles.
Concentration	0.09 mg/ml (Please refer to the vial label for the specific concentration.)
Immunogen	Carrier-protein conjugated synthetic peptide surrounding phospho Tyr1068 of human EGFR. The exact sequence is proprietary.
Purification	Purified by antigen-affinity chromatography.
Conjugation	Unconjugated

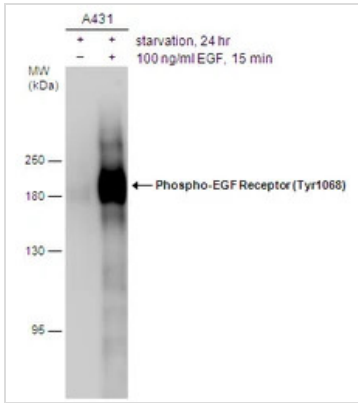
For full product information, images and publications, please visit our [website](#).

For laboratory research use only. Not for any clinical, therapeutic, or diagnostic use in humans or animals. Not for animal or human consumption.

Note

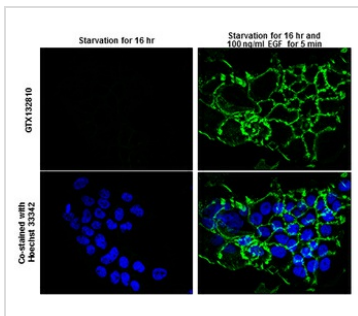
Purchasers shall not, and agree not to enable third parties to, analyze, copy, reverse engineer or otherwise attempt to determine the structure or sequence of the product.

DATA IMAGES



GTx132810 WB Image

Untreated (–) and treated (+) A431 whole cell extracts (20 µg) were separated by 7.5% SDS-PAGE, and the membrane was blotted with Phospho-EGF Receptor (Tyr1068) antibody (GTx132810) diluted at 1:2000.



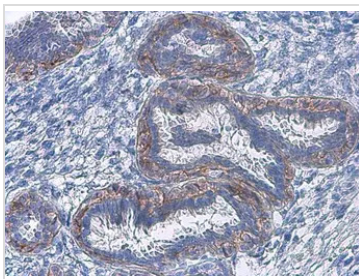
GTx132810 ICC/IF Image

EGFR (phospho Tyr1068) antibody detects EGFR (phospho Tyr1068) protein at cell membrane by immunofluorescent analysis.

Sample: A431 cells were fixed in 4% paraformaldehyde at RT for 15 min.

Green: EGFR (phospho Tyr1068) protein stained by EGFR (phospho Tyr1068) antibody (GTx132810) diluted at 1:500.

Blue: Hoechst 33342 staining.



GTx132810 IHC-P Image

EGFR (phospho Tyr1068) antibody detects EGFR (phospho Tyr1068) protein at cell membrane in human breast carcinoma by immunohistochemical analysis.

Sample: Paraffin-embedded human breast carcinoma.

EGFR (phospho Tyr1068) antibody (GTx132810) diluted at 1:500.

Antigen Retrieval: Citrate buffer, pH 6.0, 15 min



For full product information, images and publications, please visit our [website](https://www.genetex.com).