

Aquaporin 1 antibody

Cat. No. GTX132870

Host	Rabbit
Clonality	Polyclonal
Isotype	IgG
Application	WB, IHC-P
Reactivity	Human, Mouse, Rat, Rabbit

★★★★★ Review (1)

Package
100 µl, 25 µl

APPLICATION

Application Note

*Optimal dilutions/concentrations should be determined by the researcher.

Suggested dilution	Recommended dilution
WB	1:500-1:3000
IHC-P	Assay dependent

Not tested in other applications.

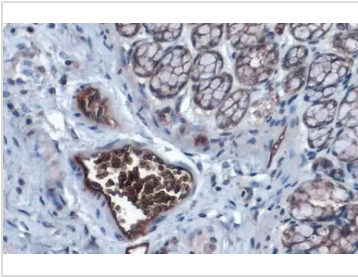
Calculated MW 29 kDa. ([Note](#))

PROPERTIES

Form	Liquid
Buffer	PBS, 20% Glycerol
Preservative	0.025% ProClin 300
Storage	Store as concentrated solution. Centrifuge briefly prior to opening vial. For short-term storage (1-2 weeks), store at 4°C. For long-term storage, aliquot and store at -20°C or below. Avoid multiple freeze-thaw cycles.
Concentration	1.17 mg/ml (Please refer to the vial label for the specific concentration.)
Immunogen	Synthetic peptide encompassing a sequence within the Intracellular domain of human Aquaporin 1. The exact sequence is proprietary.
Purification	Purified by antigen-affinity chromatography.
Conjugation	Unconjugated
Note	For laboratory use only. Not for any clinical, therapeutic, or diagnostic use in humans or animals. Not for animal or human consumption.



For full product information, images and publications, please visit our [website](#).

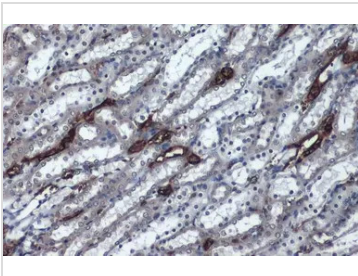
DATA IMAGES

GTX132870 IHC-P Image

Aquaporin 1 antibody detects Aquaporin 1 protein at cell membrane and cytoplasm by immunohistochemical analysis.

Sample: Paraffin-embedded rat colon.

Aquaporin 1 stained by Aquaporin 1 antibody (GTX132870) diluted at 1:1000.

Antigen Retrieval: Citrate buffer, pH 6.0, 15 min

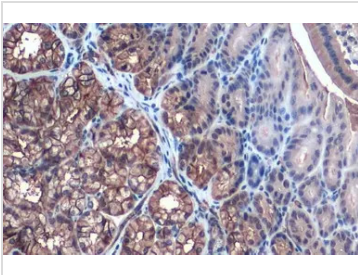

GTX132870 IHC-P Image

Aquaporin 1 antibody detects Aquaporin 1 protein at cell membrane and cytoplasm by immunohistochemical analysis.

Sample: Paraffin-embedded rat kidney.

Aquaporin 1 stained by Aquaporin 1 antibody (GTX132870) diluted at 1:1000.

Antigen Retrieval: Citrate buffer, pH 6.0, 15 min

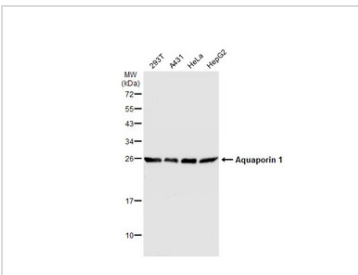

GTX132870 IHC-P Image

Aquaporin 1 antibody detects Aquaporin 1 protein at cell membrane and cytoplasm by immunohistochemical analysis.

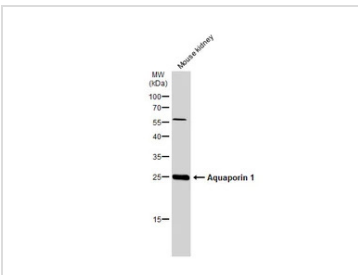
Sample: Paraffin-embedded mouse duodenum.

Aquaporin 1 stained by Aquaporin 1 antibody (GTX132870) diluted at 1:1000.

Antigen Retrieval: Citrate buffer, pH 6.0, 15 min


GTX132870 WB Image

Various whole cell extracts (30 µg) were separated by 12% SDS-PAGE, and the membrane was blotted with Aquaporin 1 antibody (GTX132870) diluted at 1:1000. The HRP-conjugated anti-rabbit IgG antibody (GTX213110-01) was used to detect the primary antibody.


GTX132870 WB Image

Mouse tissue extract (50 µg) was separated by 12% SDS-PAGE, and the membrane was blotted with Aquaporin 1 antibody (GTX132870) diluted at 1:1000. The HRP-conjugated anti-rabbit IgG antibody (GTX213110-01) was used to detect the primary antibody.



For full product information, images and publications, please visit our [website](https://www.genetex.com).