

mGluR5 antibody

Cat. No. GTX132899

Host	Rabbit
Clonality	Polyclonal
Isotype	IgG
Application	WB, IHC-P
Reactivity	Mouse, Rat

Package
100 µl, 25 µl

APPLICATION

Application Note

*Optimal dilutions/concentrations should be determined by the researcher.

Suggested dilution	Recommended dilution
WB	1:500-1:3000
IHC-P	Assay dependent

Not tested in other applications.

Calculated MW 132 kDa. ([Note](#))

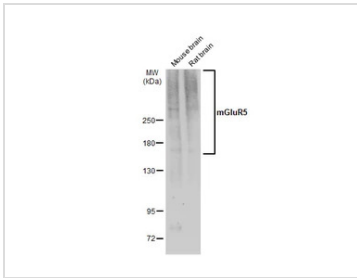
PROPERTIES

Form	Liquid
Buffer	PBS, 20% Glycerol
Preservative	0.025% ProClin 300
Storage	Store as concentrated solution. Centrifuge briefly prior to opening vial. For short-term storage (1-2 weeks), store at 4°C. For long-term storage, aliquot and store at -20°C or below. Avoid multiple freeze-thaw cycles.
Concentration	1.95 mg/ml (Please refer to the vial label for the specific concentration.)
Immunogen	Synthetic peptide encompassing a sequence within the Intracellular domain of human mGluR5. The exact sequence is proprietary.
Purification	Purified by antigen-affinity chromatography.
Conjugation	Unconjugated
Note	For laboratory use only. Not for any clinical, therapeutic, or diagnostic use in humans or animals. Not for animal or human consumption.



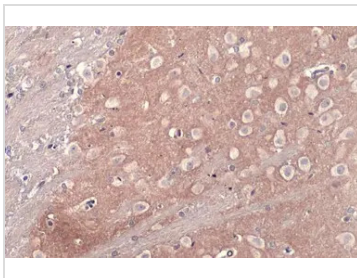
For full product information, images and publications, please visit our [website](#).

DATA IMAGES



GTX132899 WB Image

Various tissue extracts (50 µg) were separated by 5% SDS-PAGE, and the membrane was blotted with mGluR5 antibody (GTX132899) diluted at 1:1000. The HRP-conjugated anti-rabbit IgG antibody (GTX213110-01) was used to detect the primary antibody.



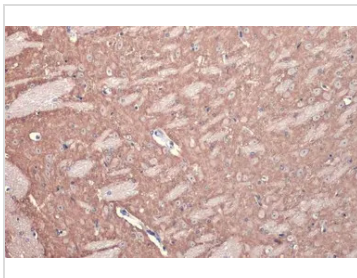
GTX132899 IHC-P Image

mGluR5 antibody detects mGluR5 protein at cell membrane and cytoplasm by immunohistochemical analysis.

Sample: Paraffin-embedded rat brain.

mGluR5 stained by mGluR5 antibody (GTX132899) diluted at 1:500.

Antigen Retrieval: Citrate buffer, pH 6.0, 15 min



GTX132899 IHC-P Image

mGluR5 antibody detects mGluR5 protein at cell membrane and cytoplasm by immunohistochemical analysis.

Sample: Paraffin-embedded mouse brain.

mGluR5 stained by mGluR5 antibody (GTX132899) diluted at 1:500.

Antigen Retrieval: Citrate buffer, pH 6.0, 15 min



For full product information, images and publications, please visit our [website](https://www.genetex.com).