

HDAC9 antibody

Cat. No. GTX132949

Host	Rabbit
Clonality	Polyclonal
Isotype	IgG
Applications	WB, IHC-P
Reactivity	Human, Mouse

Package
100 µl, 25 µl

Applications

Application Note

*Optimal dilutions/concentrations should be determined by the researcher.

Suggested dilution	Recommended dilution
WB	1:500-1:3000
IHC-P	Assay dependent

Not tested in other applications.

Calculated MW 111 kDa. ([Note](#))

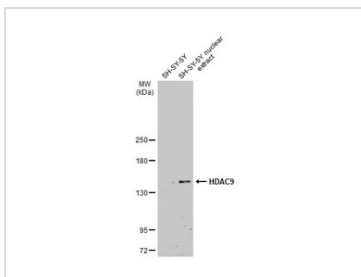
Properties

Form	Liquid
Buffer	PBS, 20% Glycerol
Preservative	0.025% ProClin 300
Storage	Store as concentrated solution. Centrifuge briefly prior to opening vial. For short-term storage (1-2 weeks), store at 4°C. For long-term storage, aliquot and store at -20°C or below. Avoid multiple freeze-thaw cycles.
Concentration	1.07 mg/ml (Please refer to the vial label for the specific concentration.)
Immunogen	Carrier-protein conjugated synthetic peptide encompassing a sequence within the center region of human HDAC9. The exact sequence is proprietary.
Purification	Purified by antigen-affinity chromatography.
Conjugation	Unconjugated
Note	For laboratory use only. Not for any clinical, therapeutic, or diagnostic use in humans or animals. Not for animal or human consumption.



For full product information, images and publications, please visit our [website](#).

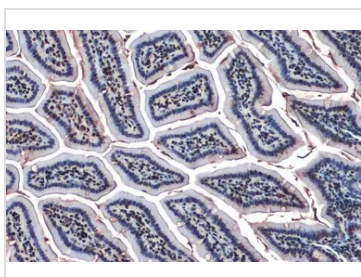
DATA IMAGES



GTX132949 WB Image

SH-SY5Y whole cell and nuclear extracts (30 µg) were separated by 5% SDS-PAGE, and the membrane was blotted with HDAC9 antibody (GTX132949) diluted at 1:500. The HRP-conjugated anti-rabbit IgG antibody (GTX213110-01) was used to detect the primary antibody, and the signal was developed with Trident ECL plus-Enhanced.

The observed M.W. is based on the publication: [PMID: 26865248](https://pubmed.ncbi.nlm.nih.gov/26865248/)



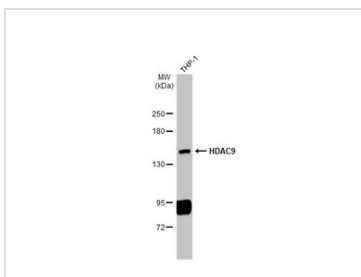
GTX132949 IHC-P Image

HDAC9 antibody detects HDAC9 protein at nucleus by immunohistochemical analysis.

Sample: Paraffin-embedded mouse intestine.

HDAC9 stained by HDAC9 antibody (GTX132949) diluted at 1:500.

Antigen Retrieval: Citrate buffer, pH 6.0, 15 min



GTX132949 WB Image

Whole cell extract (30 µg) was separated by 5% SDS-PAGE, and the membrane was blotted with HDAC9 antibody (GTX132949) diluted at 1:500. The HRP-conjugated anti-rabbit IgG antibody (GTX213110-01) was used to detect the primary antibody.



For full product information, images and publications, please visit our [website](https://www.genetex.com).