

## NDUFA9 antibody

Cat. No. GTX132978

Host	Rabbit
Clonality	Polyclonal
Isotype	IgG
Applications	WB, ICC/IF, IHC-P
Reactivity	Human, Mouse, Rat

References ( 1 )

Package

100 µl, 25 µl

## Applications

## Application Note

\*Optimal dilutions/concentrations should be determined by the researcher.

Suggested dilution	Recommended dilution
WB	1:500-1:3000
ICC/IF	1:100-1:1000
IHC-P	Assay dependent

Not tested in other applications.

Calculated MW 43 kDa. ( [Note](#) )

## Properties

Form	Liquid
Buffer	PBS, 1% BSA, 20% Glycerol
Preservative	0.025% ProClin 300
Storage	Store as concentrated solution. Centrifuge briefly prior to opening vial. For short-term storage (1-2 weeks), store at 4°C. For long-term storage, aliquot and store at -20°C or below. Avoid multiple freeze-thaw cycles.
Concentration	0.3 mg/ml (Please refer to the vial label for the specific concentration.)
Immunogen	Carrier-protein conjugated synthetic peptide encompassing a sequence within the center region of human NDUFA9. The exact sequence is proprietary.
Purification	Purified by antigen-affinity chromatography.
Conjugation	Unconjugated

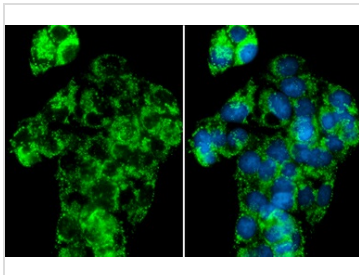
## Note

For laboratory research use only. Not for any clinical, therapeutic, or diagnostic use in humans or animals. Not for animal or human consumption.

Purchasers shall not, and agree not to enable third parties to, analyze, copy, reverse engineer or otherwise attempt to determine the structure or sequence of the product.



For full product information, images and publications, please visit our [website](#).

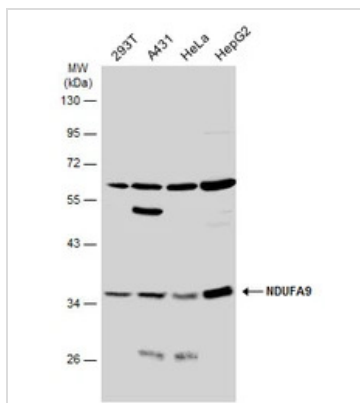
**DATA IMAGES**

**GTX132978 ICC/IF Image**

NDUF9 antibody detects NDUF9 protein at mitochondria by immunofluorescent analysis.

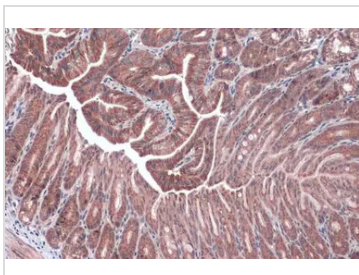
Sample: HepG2 cells were fixed in ice-cold MeOH for 5 min.

Green: NDUF9 stained by NDUF9 antibody (GTX132978) diluted at 1:500.

Blue: Hoechst 33342 staining.


**GTX132978 WB Image**

Various whole cell extracts (30 µg) were separated by 10% SDS-PAGE, and the membrane was blotted with NDUF9 antibody (GTX132978) diluted at 1:1000. The HRP-conjugated anti-rabbit IgG antibody (GTX213110-01) was used to detect the primary antibody.

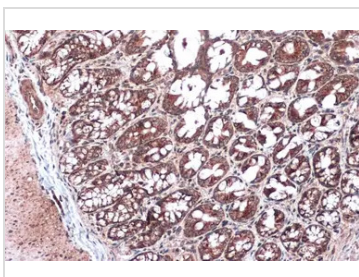

**GTX132978 IHC-P Image**

NDUF9 antibody detects NDUF9 protein at mitochondria by immunohistochemical analysis.

Sample: Paraffin-embedded mouse duodenum.

NDUF9 stained by NDUF9 antibody (GTX132978) diluted at 1:500.

Antigen Retrieval: Citrate buffer, pH 6.0, 15 min


**GTX132978 IHC-P Image**

NDUF9 antibody detects NDUF9 protein at mitochondria by immunohistochemical analysis.

Sample: Paraffin-embedded rat colon.

NDUF9 stained by NDUF9 antibody (GTX132978) diluted at 1:500.

Antigen Retrieval: Citrate buffer, pH 6.0, 15 min



For full product information, images and publications, please visit our [website](https://www.genetex.com).