

# Bombesin Receptor 3 antibody

**Cat. No. GTX13304**

<b>Host</b>	Rabbit
<b>Clonality</b>	Polyclonal
<b>Isotype</b>	IgG
<b>Application</b>	IHC-P
<b>Reactivity</b>	Human

**Package**

25 µg

## APPLICATION

### Application Note

\*Optimal dilutions/concentrations should be determined by the researcher.

Suggested dilution	Recommended dilution
IHC-P	7 µg/ml
Not tested in other applications.	

**Calculated MW** 44 kDa. ( [Note](#) )

## PROPERTIES

<b>Form</b>	Liquid
<b>Buffer</b>	PBS
<b>Preservative</b>	0.1% Sodium azide
<b>Storage</b>	Store as concentrated solution. Centrifuge briefly prior to opening vial. For short-term storage (1-2 weeks), store at 4°C. For long-term storage, aliquot and store at -20°C or below. Avoid multiple freeze-thaw cycles.
<b>Concentration</b>	1 mg/ml (Please refer to the vial label for the specific concentration.)
<b>Immunogen</b>	Synthetic 13 amino acid peptide from C-terminus of human BRS3.
<b>Purification</b>	Purified by affinity chromatography
<b>Conjugation</b>	Unconjugated

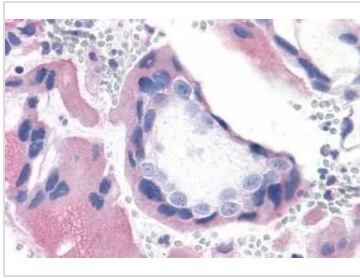
### Note

For laboratory research use only. Not for any clinical, therapeutic, or diagnostic use in humans or animals. Not for animal or human consumption.

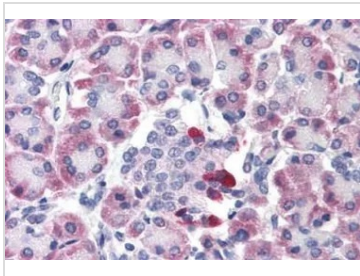
Purchasers shall not, and agree not to enable third parties to, analyze, copy, reverse engineer or otherwise attempt to determine the structure or sequence of the product.



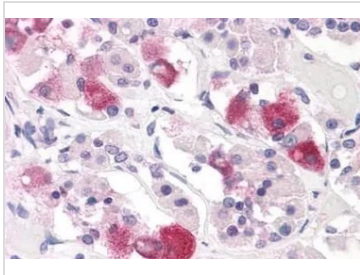
For full product information, images and publications, please visit our [website](#).

**DATA IMAGES**

**GTX13304 IHC-P Image**

IHC-P analysis of human placenta, villi tissue using GTX13304 Bombesin Receptor 3 antibody.  
Antigen retrieval : Heat-induced antigen retrieval


**GTX13304 IHC-P Image**

IHC-P analysis of pancreas, islets of Langerhans tissue using GTX13304 Bombesin Receptor 3 antibody.


**GTX13304 IHC-P Image**

IHC-P analysis of pituitary, pars anterior tissue using GTX13304 Bombesin Receptor 3 antibody.



For full product information, images and publications, please visit our [website](https://www.genetex.com).