

PSD95 antibody

Cat. No. GTX133091

Host	Rabbit
Clonality	Polyclonal
Isotype	IgG
Applications	WB, ICC/IF, IHC-P, IHC-Fr
Reactivity	Human, Mouse, Rat

References (32)

Package

100 µl, 25 µl

PRODUCT

Summary

PSD95 antibody recognizes postsynaptic density protein 95, an ~80 kDa multidomain scaffold protein enriched at neuron postsynaptic excitatory membranes. It belongs to the membrane-associated guanylate kinase (MAGUK) family, which also contains PSD-93, SAP97 and SAP102. PSD95 is one of the most abundant proteins in the PSD, and functions in synapse maturation, strength, and plasticity.

Applications

Application Note

*Optimal dilutions/concentrations should be determined by the researcher.

Suggested dilution	Recommended dilution
WB	1:500-1:3000
ICC/IF	1:100-1:1000
IHC-P	1:100-1:1000
IHC-Fr	1:100-1:1000

Not tested in other applications.

Calculated MW 80 kDa. ([Note](#))

Properties

Form	Liquid
Buffer	PBS, 20% Glycerol
Preservative	0.025% ProClin 300
Storage	Store as concentrated solution. Centrifuge briefly prior to opening vial. For short-term storage (1-2 weeks), store at 4°C. For long-term storage, aliquot and store at -20°C or below. Avoid multiple freeze-thaw cycles.
Concentration	1.31 mg/ml (Please refer to the vial label for the specific concentration.)
Immunogen	Carrier-protein conjugated synthetic peptide encompassing a sequence within the N-terminus region of mouse PSD95. The exact sequence is proprietary.
Purification	Purified by antigen-affinity chromatography.



For full product information, images and publications, please visit our [website](#).

Date 2026 / 04 / 04 Page 1 of 2

Conjugation

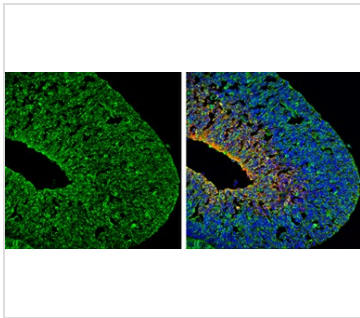
Unconjugated

Note

For laboratory research use only. Not for any clinical, therapeutic, or diagnostic use in humans or animals. Not for animal or human consumption.

Purchasers shall not, and agree not to enable third parties to, analyze, copy, reverse engineer or otherwise attempt to determine the structure or sequence of the product.

DATA IMAGES



GTX133091 IHC-Fr Image

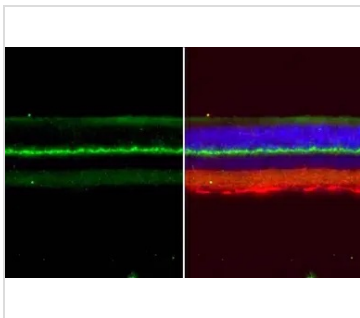
PSD95 antibody detects PSD95 protein expression by immunohistochemical analysis.

Sample: Frozen sectioned E13.5 Rat brain.

Green: PSD95 protein stained by PSD95 antibody (GTX133091) diluted at 1:250.

Red: beta Tubulin 3/ TUJ1, a mature neuron marker, stained by beta Tubulin 3/ TUJ1 antibody [GT11710] (GTX631836) diluted at 1:500.

Blue: Fluoroshield with DAPI (GTX30920).



GTX133091 IHC-P Image

PSD95 antibody detects PSD95 protein at nucleus by immunohistochemical analysis.

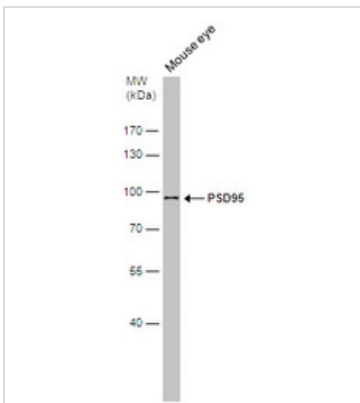
Sample: Paraffin-embedded mouse eye.

Green: PSD95 stained by PSD95 antibody (GTX133091) diluted at 1:500.

Red: beta Tubulin 3/ Tuj1, a Cytoskeleton marker, stained by beta Tubulin 3/ Tuj1 antibody [GT11710] (GTX631836) diluted at 1:500.

Blue: Fluoroshield with DAPI (GTX30920).

Antigen Retrieval: Citrate buffer, pH 6.0, 15 min



GTX133091 WB Image

Mouse tissue extract (50 µg) was separated by 7.5% SDS-PAGE, and the membrane was blotted with PSD95 antibody (GTX133091) diluted at 1:1000.



For full product information, images and publications, please visit our [website](#).