

GAD65 antibody

Cat. No. GTX133095

Host	Rabbit
Clonality	Polyclonal
Isotype	IgG
Applications	IHC-Fr
Reactivity	Mouse

Package
100 µl, 25 µl

Applications

Application Note

*Optimal dilutions/concentrations should be determined by the researcher.

Suggested dilution	Recommended dilution
IHC-Fr	1:100-1:1000

Not tested in other applications.

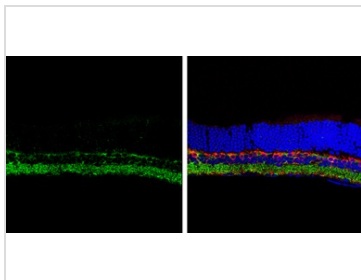
Properties

Form	Liquid
Buffer	PBS, 20% Glycerol
Preservative	0.025% ProClin 300
Storage	Store as concentrated solution. Centrifuge briefly prior to opening vial. For short-term storage (1-2 weeks), store at 4°C. For long-term storage, aliquot and store at -20°C or below. Avoid multiple freeze-thaw cycles.
Concentration	1.15 mg/ml (Please refer to the vial label for the specific concentration.)
Immunogen	Carrier-protein conjugated synthetic peptide encompassing a sequence within the N-terminus region of mouse GAD65. The exact sequence is proprietary.
Purification	Purified by antigen-affinity chromatography.
Conjugation	Unconjugated
Note	<p>For laboratory research use only. Not for any clinical, therapeutic, or diagnostic use in humans or animals. Not for animal or human consumption.</p> <p>Purchasers shall not, and agree not to enable third parties to, analyze, copy, reverse engineer or otherwise attempt to determine the structure or sequence of the product.</p>



For full product information, images and publications, please visit our [website](#).

DATA IMAGES



GTx133095 IHC-Fr Image

GAD65 antibody detects GAD65 protein by immunohistochemical analysis.

Sample: Frozen sectioned adult mouse retina.

Green: GAD65 protein stained by GAD65 antibody (GTx133095) diluted at 1:250.

Red: Protein kinase C alpha staining.

Blue: Fluoroshield with DAPI (GTx30920).



For full product information, images and publications, please visit our [website](#).