

Nestin antibody

Cat. No. GTX133112

Host	Rabbit
Clonality	Polyclonal
Isotype	IgG
Application	WB, ICC/IF
Reactivity	Human, Mouse, Rat

Package
100 µl, 25 µl

APPLICATION

Application Note

*Optimal dilutions/concentrations should be determined by the researcher.

Suggested dilution	Recommended dilution
WB	1:500-1:3000
ICC/IF	1:100-1:1000

Not tested in other applications.

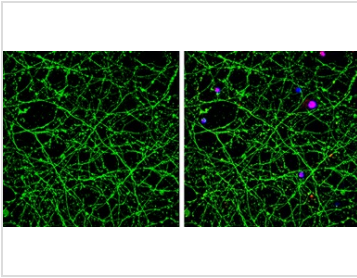
Calculated MW 207 kDa. ([Note](#))

PROPERTIES

Form	Liquid
Buffer	PBS, 20% Glycerol
Preservative	0.025% ProClin 300
Storage	Store as concentrated solution. Centrifuge briefly prior to opening vial. For short-term storage (1-2 weeks), store at 4°C. For long-term storage, aliquot and store at -20°C or below. Avoid multiple freeze-thaw cycles.
Concentration	2.15 mg/ml (Please refer to the vial label for the specific concentration.)
Immunogen	Carrier-protein conjugated synthetic peptide encompassing a sequence within the C-terminus region of mouse Nestin. The exact sequence is proprietary.
Purification	Purified by antigen-affinity chromatography.
Conjugation	Unconjugated
Note	For laboratory research use only. Not for any clinical, therapeutic, or diagnostic use in humans or animals. Not for animal or human consumption. Purchasers shall not, and agree not to enable third parties to, analyze, copy, reverse engineer or otherwise attempt to determine the structure or sequence of the product.



For full product information, images and publications, please visit our [website](#).

DATA IMAGES

GTX133112 ICC/IF Image

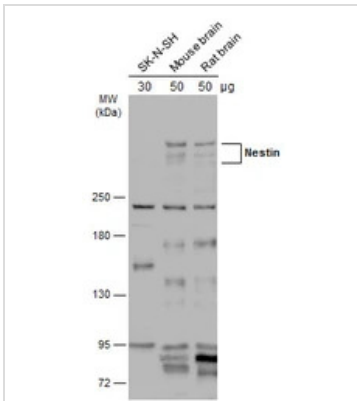
Nestin antibody detects Nestin protein by immunofluorescent analysis.

Sample: DIV10 rat E18 primary cortical neuron cells were fixed in 4% paraformaldehyde at RT for 15 min.

Green: Nestin stained by Nestin antibody (GTX133112) diluted at 1:500.

Red: TDP43, stained by TDP43 antibody [GT225] (GTX630196) diluted at 1:500.

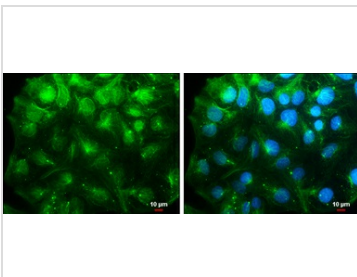
Blue: Fluoroshield with DAPI (GTX30920).


GTX133112 WB Image

Various whole cell and tissue extracts were separated by 5% SDS-PAGE, and the membrane was blotted with

Nestin antibody (GTX133112) diluted at 1:1000. The HRP-conjugated anti-rabbit IgG antibody

(GTX213110-01) was used to detect the primary antibody.


GTX133112 ICC/IF Image

Nestin antibody detects Nestin protein at cytoskeleton by immunofluorescent analysis.

Sample: NT2D1 cells were fixed in 4% paraformaldehyde at RT for 15 min.

Green: Nestin stained by Nestin antibody (GTX133112) diluted at 1:500.

Blue: Hoechst 33342 staining.

Scale bar= 10μm.



For full product information, images and publications, please visit our [website](https://www.genetex.com).