

Somatostatin antibody

Cat. No. GTX133119

Host	Rabbit
Clonality	Polyclonal
Isotype	IgG
Applications	WB, ICC/IF, IHC-P, IHC-Fr
Reactivity	Human, Mouse, Rat

References (13)

Package

100 µl, 25 µl

PRODUCT

Summary

Somatostatin antibody recognizes somatostatin, a small peptide hormone (existing in two forms) found predominately in the nervous and digestive systems. It acts as both a neurotransmitter and an inhibitory regulator of the secretion of other hormones. Somatostatin also has antiproliferative activity and promotes apoptosis.

Applications

Application Note

*Optimal dilutions/concentrations should be determined by the researcher.

Suggested dilution	Recommended dilution
WB	Assay dependent
ICC/IF	1:100-1:1000
IHC-P	1:100-1:1000
IHC-Fr	1:100-1:1000

Not tested in other applications.

Calculated MW 13 kDa. ([Note](#))

Properties

Form	Liquid
Buffer	PBS, 20% Glycerol
Preservative	0.025% ProClin 300
Storage	Store as concentrated solution. Centrifuge briefly prior to opening vial. For short-term storage (1-2 weeks), store at 4°C. For long-term storage, aliquot and store at -20°C or below. Avoid multiple freeze-thaw cycles.
Concentration	1.71 mg/ml (Please refer to the vial label for the specific concentration.)
Immunogen	Carrier-protein conjugated synthetic peptide encompassing a sequence within the C-terminus region of mouse Somatostatin. The exact sequence is proprietary.
Purification	Purified by antigen-affinity chromatography.

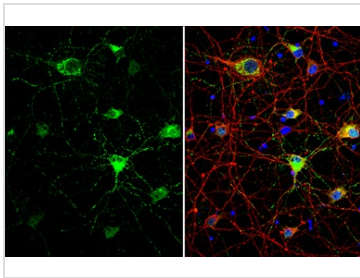


For full product information, images and publications, please visit our [website](#).

Conjugation Unconjugated

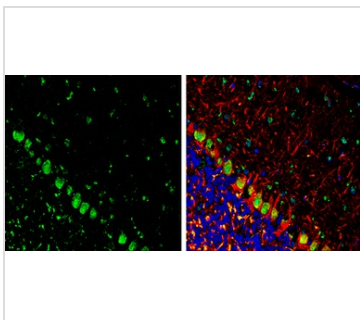
Note For laboratory research use only. Not for any clinical, therapeutic, or diagnostic use in humans or animals. Not for animal or human consumption.
Purchasers shall not, and agree not to enable third parties to, analyze, copy, reverse engineer or otherwise attempt to determine the structure or sequence of the product.

DATA IMAGES



GTX133119 ICC/IF Image

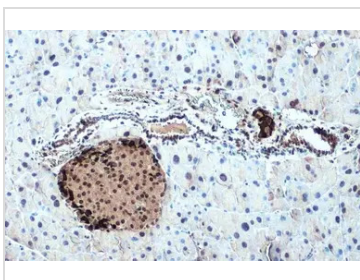
Somatostatin antibody detects Somatostatin protein by immunofluorescent analysis.
Sample: DIV10 rat E18 primary cortical neuron cells were fixed in 4% paraformaldehyde at RT for 15 min.
Green: Somatostatin stained by Somatostatin antibody (GTX133119) diluted at 1:500.
Red: Tau, stained by Tau antibody [GT287] (GTX634809) diluted at 1:500.
Blue: Fluoroshield with DAPI (GTX30920).



GTX133119 IHC-Fr Image

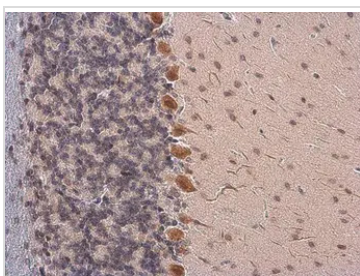
Somatostatin antibody detects Somatostatin Protein expression by immunohistochemical analysis.
Sample: Frozen-sectioned adult mouse cerebellum.
Green: Somatostatin stained by Somatostatin antibody (GTX133119) diluted at 1:250.
Red: NF-H, stained by NF-H antibody [GT114] (GTX634289) diluted at 1:500.
Blue: Fluoroshield with DAPI (GTX30920).

Antigen Retrieval: Citrate buffer, pH 6.0, 10 min



GTX133119 IHC-P Image

Somatostatin antibody detects secreted Somatostatin protein by immunohistochemical analysis.
Sample: Paraffin-embedded mouse pancreas.
Somatostatin stained by Somatostatin antibody (GTX133119) diluted at 1:1000.
Antigen Retrieval: Citrate buffer, pH 6.0, 15 min



GTX133119 IHC-P Image

Somatostatin antibody detects Somatostatin protein at cytoplasm and nucleus by immunohistochemical analysis.
Sample: Paraffin-embedded rat brain.
Somatostatin stained by Somatostatin antibody (GTX133119) diluted at 1:1000.
Antigen Retrieval: Citrate buffer, pH 6.0, 15 min



For full product information, images and publications, please visit our [website](#).