

## KCC2 antibody

Cat. No. GTX133130

Host	Rabbit
Clonality	Polyclonal
Isotype	IgG
Application	WB, ICC/IF, IHC-P
Reactivity	Human, Mouse, Rat

Reference ( 1 )  
Package  
100 µl, 25 µl

## APPLICATION

## Application Note

\*Optimal dilutions/concentrations should be determined by the researcher.

Suggested dilution	Recommended dilution
WB	1:500-1:10000
ICC/IF	1:100-1:1000
IHC-P	1:100-1:1000

Not tested in other applications.

Calculated MW 126 kDa. ( [Note](#) )

## PROPERTIES

Form	Liquid
Buffer	PBS, 20% Glycerol
Preservative	0.025% ProClin 300
Storage	Store as concentrated solution. Centrifuge briefly prior to opening vial. For short-term storage (1-2 weeks), store at 4°C. For long-term storage, aliquot and store at -20°C or below. Avoid multiple freeze-thaw cycles.
Concentration	0.92 mg/ml (Please refer to the vial label for the specific concentration.)
Immunogen	Synthetic peptide encompassing a sequence within the Intracellular domain of mouse KCC2. The exact sequence is proprietary.
Purification	Purified by antigen-affinity chromatography.
Conjugation	Unconjugated

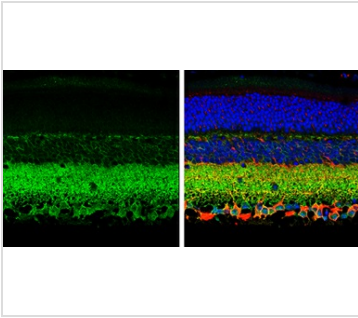
## Note

For laboratory research use only. Not for any clinical, therapeutic, or diagnostic use in humans or animals. Not for animal or human consumption.

Purchasers shall not, and agree not to enable third parties to, analyze, copy, reverse engineer or otherwise attempt to determine the structure or sequence of the product.



For full product information, images and publications, please visit our [website](#).

**DATA IMAGES**

**GTX133130 IHC-P Image**

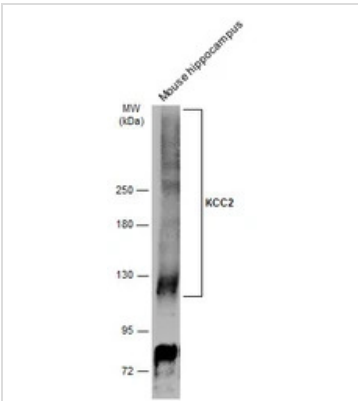
KCC2 antibody detects KCC2 protein expression by immunohistochemical analysis.

Sample: Paraffin-Embedded adult mouse retina.

Green: KCC2 protein stained by KCC2 antibody (GTX133130) diluted at 1:250.

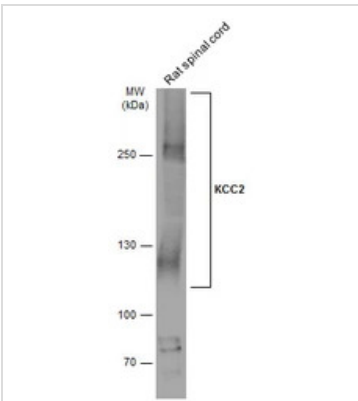
Red: beta Tubulin 3/ TUJ1, stained by beta Tubulin 3/ TUJ1 antibody [GT11710] (GTX631836) diluted at 1:500.

Blue: Fluoroshield with DAPI (GTX30920).


**GTX133130 WB Image**

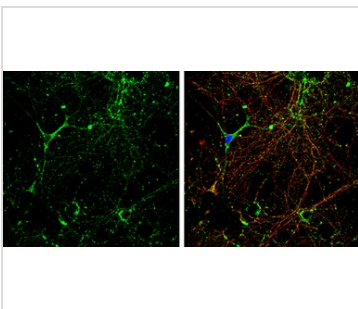
Mouse tissue extract (50 µg) was separated by 5% SDS-PAGE, and the membrane was blotted with KCC2 antibody (GTX133130) diluted at 1:5000. The HRP-conjugated anti-rabbit IgG antibody (GTX213110-01) was used to detect the primary antibody.

The observed M.W. is based on the publication: [PMID: 29028184](https://pubmed.ncbi.nlm.nih.gov/29028184/)


**GTX133130 WB Image**

Rat tissue extract (50 µg) was separated by 5% SDS-PAGE, and the membrane was blotted with KCC2 antibody (GTX133130) diluted at 1:5000. The HRP-conjugated anti-rabbit IgG antibody (GTX213110-01) was used to detect the primary antibody.

The observed M.W. is based on the publication: [PMID: 29028184](https://pubmed.ncbi.nlm.nih.gov/29028184/)


**GTX133130 ICC/IF Image**

KCC2 antibody detects KCC2 protein by immunofluorescent analysis.

Sample: DIV10 rat E18 primary hippocampal neurons were fixed in 4% paraformaldehyde at RT for 15 min.

Green: KCC2 protein stained by KCC2 antibody (GTX133130) diluted at 1:500.

Red: beta Tubulin 3/ Tuj1, stained by beta Tubulin 3/ Tuj1 antibody [GT1338] (GTX631831) diluted at 1:500.

Blue: Fluoroshield with DAPI (GTX30920).



For full product information, images and publications, please visit our [website](https://www.genetex.com).