

## GABA A Receptor alpha 1 antibody

Cat. No. GTX133147

Host	Rabbit
Clonality	Polyclonal
Isotype	IgG
Applications	WB
Reactivity	Mouse, Rat

Package  
100 µl, 25 µl

## Applications

## Application Note

\*Optimal dilutions/concentrations should be determined by the researcher.

Suggested dilution	Recommended dilution
--------------------	----------------------

WB	1:500-1:3000
----	--------------

Not tested in other applications.

Calculated MW	52 kDa. ( <a href="#">Note</a> )
---------------	----------------------------------

## Properties

Form	Liquid
------	--------

Buffer	PBS, 20% Glycerol
--------	-------------------

Preservative	0.025% ProClin 300
--------------	--------------------

Storage	Store as concentrated solution. Centrifuge briefly prior to opening vial. For short-term storage (1-2 weeks), store at 4°C. For long-term storage, aliquot and store at -20°C or below. Avoid multiple freeze-thaw cycles.
---------	--

Concentration	1.75 mg/ml (Please refer to the vial label for the specific concentration.)
---------------	---

Immunogen	Recombinant protein encompassing a sequence within the C-terminus region of mouse GABA A Receptor alpha 1. The exact sequence is proprietary.
-----------	---

Purification	Purified by antigen-affinity chromatography.
--------------	--

Conjugation	Unconjugated
-------------	--------------

## Note

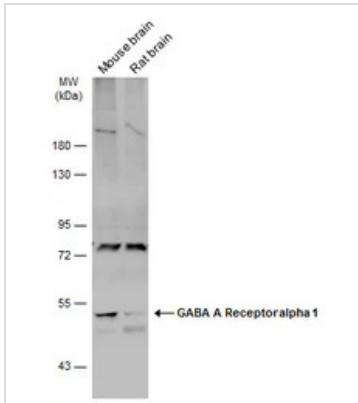
For laboratory research use only. Not for any clinical, therapeutic, or diagnostic use in humans or animals. Not for animal or human consumption.

Purchasers shall not, and agree not to enable third parties to, analyze, copy, reverse engineer or otherwise attempt to determine the structure or sequence of the product.



For full product information, images and publications, please visit our [website](#).

## DATA IMAGES

**GTX133147 WB Image**

Various tissue extracts (50  $\mu$ g) were separated by 7.5% SDS-PAGE, and the membrane was blotted with GABA A Receptor alpha 1 antibody (GTX133147) diluted at 1:500. The HRP-conjugated anti-rabbit IgG antibody (GTX213110-01) was used to detect the primary antibody.



For full product information, images and publications, please visit our [website](#).