

## GABA Transporter 1 / GAT1 antibody

Cat. No. GTX133150

Host	Rabbit
Clonality	Polyclonal
Isotype	IgG
Applications	WB, ICC/IF, IHC-P, IHC-Fr
Reactivity	Mouse, Rat

References ( 2 )

Package

100 µl, 25 µl

## Applications

## Application Note

\*Optimal dilutions/concentrations should be determined by the researcher.

Suggested dilution	Recommended dilution
WB	1:500-1:3000
ICC/IF	1:100-1:1000
IHC-P	1:100-1:1000
IHC-Fr	1:100-1:1000

Not tested in other applications.

Calculated MW 67 kDa. ( [Note](#) )

## Properties

Form	Liquid
Buffer	PBS, 20% Glycerol
Preservative	0.025% ProClin 300
Storage	Store as concentrated solution. Centrifuge briefly prior to opening vial. For short-term storage (1-2 weeks), store at 4°C. For long-term storage, aliquot and store at -20°C or below. Avoid multiple freeze-thaw cycles.
Concentration	1.55 mg/ml (Please refer to the vial label for the specific concentration.)
Immunogen	Recombinant protein encompassing a sequence within the Extracellular domain of mouse GABA Transporter 1 / GAT1. The exact sequence is proprietary.
Purification	Purified by antigen-affinity chromatography.
Conjugation	Unconjugated

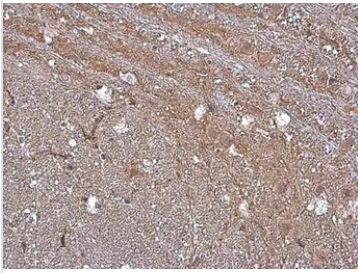


For full product information, images and publications, please visit our [website](#).

For laboratory research use only. Not for any clinical, therapeutic, or diagnostic use in humans or animals. Not for animal or human consumption.

**Note**

Purchasers shall not, and agree not to enable third parties to, analyze, copy, reverse engineer or otherwise attempt to determine the structure or sequence of the product.

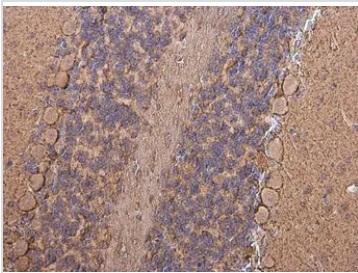
**DATA IMAGES**

**GTX133150 IHC-P Image**

GABA Transporter 1 / GAT1 antibody detects GABA Transporter 1 / GAT1 protein at cell membrane and cytoplasm in rat brain by immunohistochemical analysis.

Sample: Paraffin-embedded rat brain.

GABA Transporter 1 / GAT1 antibody (GTX133150) diluted at 1:500.

Antigen Retrieval: Citrate buffer, pH 6.0, 15 min

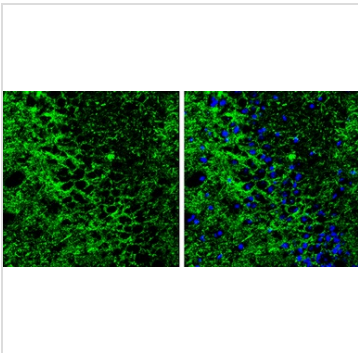

**GTX133150 IHC-P Image**

GABA Transporter 1 / GAT1 antibody detects GABA Transporter 1 / GAT1 protein at cell membrane and cytoplasm in mouse brain by immunohistochemical analysis.

Sample: Paraffin-embedded mouse brain.

GABA Transporter 1 / GAT1 antibody (GTX133150) diluted at 1:500.

Antigen Retrieval: Citrate buffer, pH 6.0, 15 min


**GTX133150 IHC-Fr Image**

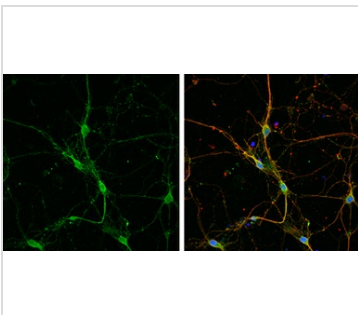
GABA Transporter 1 / GAT1 antibody detects GABA Transporter 1 / GAT1 protein by immunohistochemical analysis.

Samples: Frozen Sectioned adult mouse hippocampus.

Green: GABA Transporter 1 / GAT1 protein stained by GABA Transporter 1 / GAT1 antibody (GTX133150) diluted at 1:250.

Blue: Fluoroshield with DAPI (GTX30920).

Antigen Retrieval: Citrate buffer, pH 6.0, 10 min


**GTX133150 ICC/IF Image**

GABA Transporter 1 / GAT1 antibody detects GABA Transporter 1 / GAT1 protein by immunofluorescent analysis.

Sample: DIV9 rat E18 primary cortical neuron cells were fixed in 4% paraformaldehyde at RT for 15 min.

Green: GABA Transporter 1 / GAT1 stained by GABA Transporter 1 / GAT1 antibody (GTX133150) diluted at 1:500.

Red: beta Tubulin 3/ Tuj1, stained by beta Tubulin 3/ Tuj1 antibody [GT1338] (GTX631831) diluted at 1:500.

Blue: Fluoroshield with DAPI (GTX30920).



For full product information, images and publications, please visit our [website](https://www.genetex.com).