

Nkx2.5 antibody

Cat. No. GTX133155

Host	Rabbit
Clonality	Polyclonal
Isotype	IgG
Applications	WB, ICC/IF, IHC-P
Reactivity	Mouse, Rat

References (2)

Package

100 µl, 25 µl

Applications

Application Note

*Optimal dilutions/concentrations should be determined by the researcher.

Suggested dilution	Recommended dilution
WB	1:500-1:3000
ICC/IF	Assay dependent
IHC-P	1:100-1:1000

Not tested in other applications.

Calculated MW 34 kDa. ([Note](#))

Properties

Form	Liquid
Buffer	PBS, 20% Glycerol
Preservative	0.025% ProClin 300
Storage	Store as concentrated solution. Centrifuge briefly prior to opening vial. For short-term storage (1-2 weeks), store at 4°C. For long-term storage, aliquot and store at -20°C or below. Avoid multiple freeze-thaw cycles.
Concentration	0.9 mg/ml (Please refer to the vial label for the specific concentration.)
Immunogen	Recombinant protein encompassing a sequence within the center region of mouse Nkx2.5. The exact sequence is proprietary.
Purification	Purified by antigen-affinity chromatography.
Conjugation	Unconjugated

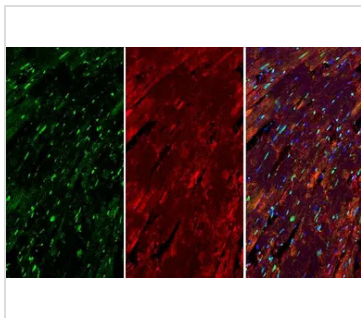
Note

For laboratory research use only. Not for any clinical, therapeutic, or diagnostic use in humans or animals. Not for animal or human consumption.

Purchasers shall not, and agree not to enable third parties to, analyze, copy, reverse engineer or otherwise attempt to determine the structure or sequence of the product.



For full product information, images and publications, please visit our [website](#).

DATA IMAGES

GTx133155 IHC-P Image

Nkx2.5 antibody detects Nkx2.5 protein at nucleus by immunohistochemical analysis.

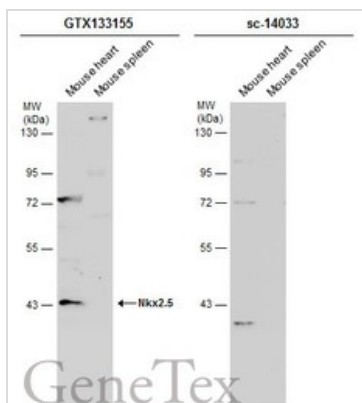
Sample: Paraffin-embedded mouse heart.

Green: Nkx2.5 stained by Nkx2.5 antibody (GTx133155) diluted at 1:250.

Red: beta Actin, a cytoskeleton marker, stained by beta Actin antibody [GT5512] (GTx629630) diluted at 1:500.

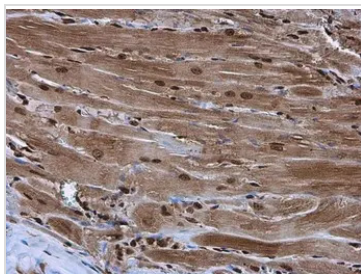
Blue: Fluoroshield with DAPI (GTx30920).

Antigen Retrieval: Citrate buffer, pH 6.0, 15 min


GTx133155 WB Image

Various tissue extracts (50 µg) were separated by 7.5% SDS-PAGE, and the membranes were blotted with Nkx2.5 antibody (GTx133155) diluted at 1:500 and competitor's antibody (sc-14033) diluted at 1:500. The HRP-conjugated anti-rabbit IgG antibody (GTx213110-01) was used to detect the primary antibody.

*The competitor is not affiliated with GeneTex and does not endorse this product.

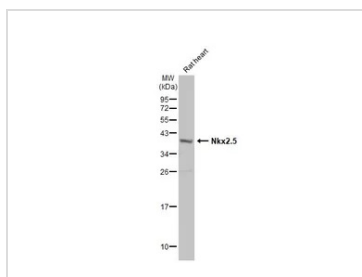

GTx133155 IHC-P Image

Nkx2.5 antibody detects Nkx2.5 protein at cytoplasm and nucleus by immunohistochemical analysis.

Sample: Paraffin-embedded rat heart.

Nkx2.5 stained by Nkx2.5 antibody (GTx133155) diluted at 1:500.

Antigen Retrieval: Citrate buffer, pH 6.0, 15 min


GTx133155 WB Image

Rat tissue extract (50 µg) was separated by 12% SDS-PAGE, and the membrane was blotted with Nkx2.5 antibody (GTx133155) diluted at 1:1000. The HRP-conjugated anti-rabbit IgG antibody (GTx213110-01) was used to detect the primary antibody.



For full product information, images and publications, please visit our [website](https://www.genetex.com).