

# EBI2 antibody

**Cat. No. GTX13319**

<b>Host</b>	Rabbit
<b>Clonality</b>	Polyclonal
<b>Isotype</b>	IgG
<b>Application</b>	IHC-P
<b>Reactivity</b>	Human, Monkey

**Package**

25 µg

## APPLICATION

### Application Note

\*Optimal dilutions/concentrations should be determined by the researcher.

Suggested dilution	Recommended dilution
IHC-P	3 µg/ml

Not tested in other applications.

**Calculated MW** 41 kDa. ( [Note](#) )

## PROPERTIES

<b>Form</b>	Liquid
<b>Buffer</b>	PBS
<b>Preservative</b>	0.1% Sodium azide
<b>Storage</b>	Store as concentrated solution. Centrifuge briefly prior to opening vial. For short-term storage (1-2 weeks), store at 4°C. For long-term storage, aliquot and store at -20°C or below. Avoid multiple freeze-thaw cycles.
<b>Concentration</b>	1 mg/ml (Please refer to the vial label for the specific concentration.)
<b>Immunogen</b>	Synthetic 18 amino acid peptide from 2nd extracellular domain of human GPR183 / EBI2.
<b>Purification</b>	Purified by affinity chromatography
<b>Conjugation</b>	Unconjugated

### Note

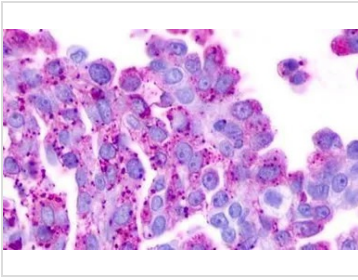
For laboratory research use only. Not for any clinical, therapeutic, or diagnostic use in humans or animals. Not for animal or human consumption.

Purchasers shall not, and agree not to enable third parties to, analyze, copy, reverse engineer or otherwise attempt to determine the structure or sequence of the product.

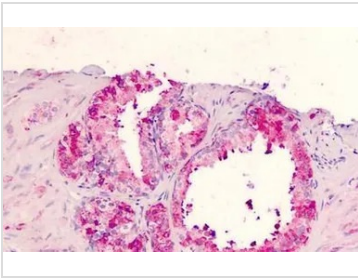


For full product information, images and publications, please visit our [website](#).

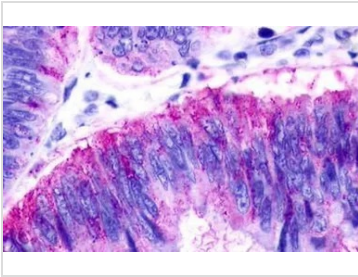
## DATA IMAGES


**GTX13319 IHC-P Image**

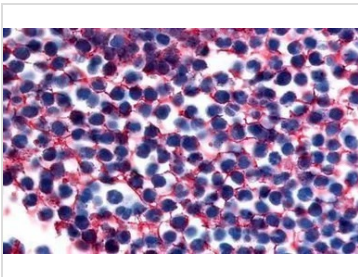
IHC-P analysis of ovary, carcinoma tissue using GTX13319 EBI2 antibody.


**GTX13319 IHC-P Image**

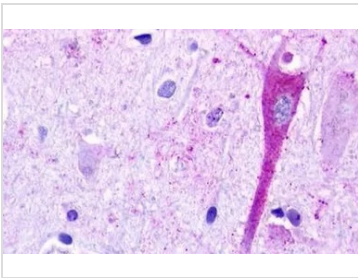
IHC-P analysis of human prostate tissue using GTX13319 EBI2 antibody.


**GTX13319 IHC-P Image**

IHC-P analysis of colon, adenocarcinoma tissue using GTX13319 EBI2 antibody.


**GTX13319 IHC-P Image**

IHC-P analysis of human peripheral blood leukocytes tissue using GTX13319 EBI2 antibody.  
Antigen retrieval : Heat-induced antigen retrieval


**GTX13319 IHC-P Image**

IHC-P analysis of brain, cortex neurons tissue using GTX13319 EBI2 antibody.



For full product information, images and publications, please visit our [website](#).