

IL21 Receptor antibody

Cat. No. GTX13321

Host	Goat
Clonality	Polyclonal
Isotype	IgG
Applications	ELISA, IHC
Reactivity	Human, Mouse

Package

50 µg

Applications

Application Note

*Optimal dilutions/concentrations should be determined by the researcher.

Suggested dilution	Recommended dilution
ELISA	1:50,000
IHC	1:300

Not tested in other applications.

Properties

Form	Liquid
Buffer	10mM KHPO ₄ , 140mM NaCl, 0.1% BSA
Preservative	0.1% Sodium azide
Storage	Store as concentrated solution. Centrifuge briefly prior to opening vial. For short-term storage (1-2 weeks), store at 4°C. For long-term storage, aliquot and store at -20°C or below. Avoid multiple freeze-thaw cycles.
Concentration	1 mg/ml (Please refer to the vial label for the specific concentration.)
Immunogen	Synthetic peptide CILEMWNLHPSTLTWTWQDQYEELKDEATS corresponding to 35-65 residues of N-terminus of human IL-21 receptor.
Purification	Purified by affinity chromatography
Conjugation	Unconjugated

Note

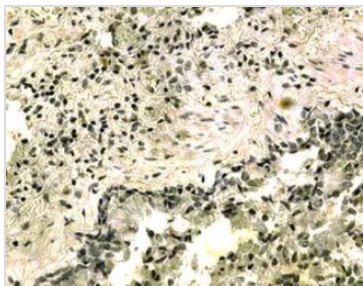
For laboratory research use only. Not for any clinical, therapeutic, or diagnostic use in humans or animals. Not for animal or human consumption.

Purchasers shall not, and agree not to enable third parties to, analyze, copy, reverse engineer or otherwise attempt to determine the structure or sequence of the product.



For full product information, images and publications, please visit our [website](#).

DATA IMAGES



GTX13321 IHC Image

IHC analysis of human lung tissue using GTX13321 IL21 Receptor antibody.



For full product information, images and publications, please visit our [website](#).