

NF-M antibody

Cat. No. GTX133218

| | |
|---------------------|--------------------|
| Host | Rabbit |
| Clonality | Polyclonal |
| Isotype | IgG |
| Applications | WB, ICC/IF, IHC-Fr |
| Reactivity | Mouse, Rat |

Package
100 µl, 25 µl

Applications

Application Note

*Optimal dilutions/concentrations should be determined by the researcher.

| Suggested dilution | Recommended dilution |
|--------------------|----------------------|
| WB | 1:500-1:3000 |
| ICC/IF | 1:100-1:1000 |
| IHC-Fr | 1:100-1:1000 |

Not tested in other applications.

Calculated MW 96 kDa. ([Note](#))

Properties

| | |
|----------------------|--|
| Form | Liquid |
| Buffer | PBS, 1% BSA, 20% Glycerol |
| Preservative | 0.025% ProClin 300 |
| Storage | Store as concentrated solution. Centrifuge briefly prior to opening vial. For short-term storage (1-2 weeks), store at 4°C. For long-term storage, aliquot and store at -20°C or below. Avoid multiple freeze-thaw cycles. |
| Concentration | 0.1 mg/ml (Please refer to the vial label for the specific concentration.) |
| Immunogen | Recombinant protein encompassing a sequence within the C-terminus region of mouse NF-M. The exact sequence is proprietary. |
| Purification | Purified by antigen-affinity chromatography. |
| Conjugation | Unconjugated |

Note

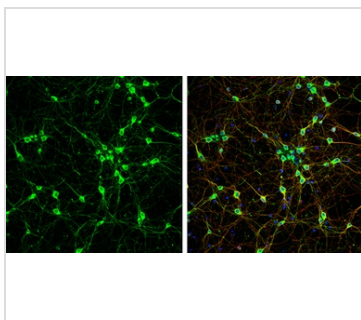
For laboratory research use only. Not for any clinical, therapeutic, or diagnostic use in humans or animals. Not for animal or human consumption.

Purchasers shall not, and agree not to enable third parties to, analyze, copy, reverse engineer or otherwise attempt to determine the structure or sequence of the product.



For full product information, images and publications, please visit our [website](#).

Date 2026 / 02 / 01 Page 1 of 2

DATA IMAGES

GTX133218 ICC/IF Image

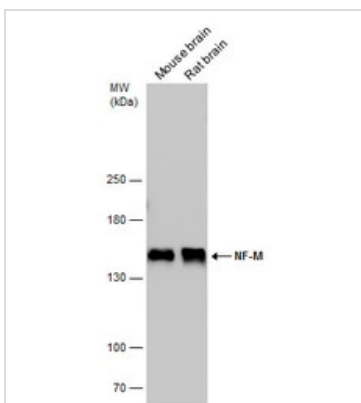
NF-M antibody detects NF-M protein at nucleus by immunofluorescent analysis.

Sample: DIV9 rat E18 primary cortical neurons were fixed in 4% paraformaldehyde at RT for 15 min.

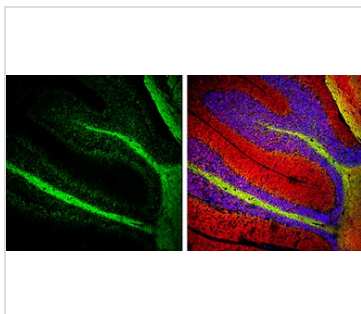
Green: NF-M protein stained by NF-M antibody (GTX133218) diluted at 1:500.

Red: beta Tubulin 3/ Tuj1, a neuron cell marker, stained by beta Tubulin 3/ Tuj1 antibody [GT11710] (GTX631836) diluted at 1:500.

Blue: Fluoroshield with DAPI (GTX30920).


GTX133218 WB Image

Various tissue extracts (50 µg) were separated by 5% SDS-PAGE, and the membrane was blotted with NF-M antibody (GTX133218) diluted at 1:1000.


GTX133218 IHC-Fr Image

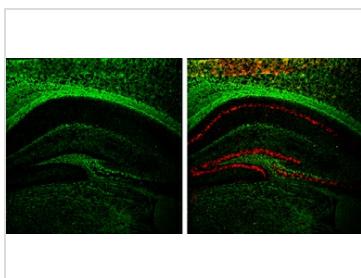
NF-M antibody detects NF-M protein expression by immunohistochemical analysis.

Sample: Frozen-sectioned adult mouse cerebellum.

Green: NF-M protein stained by NF-M antibody (GTX133218) diluted at 1:250.

Red: beta Tubulin 3/ TUJ1, stained by beta Tubulin 3/ TUJ1 antibody [GT11710] (GTX631836) diluted at 1:500.

Blue: Fluoroshield with DAPI (GTX30920).


GTX133218 IHC-Fr Image

NF-M antibody detects NF-M protein expression by immunohistochemical analysis.

Sample: Frozen-sectioned adult mouse hippocampus.

Green: NF-M protein stained by NF-M antibody (GTX133218) diluted at 1:250.

Red: NeuN, stained by NeuN antibody [2Q158] (GTX30773) diluted at 1:500.



For full product information, images and publications, please visit our [website](https://www.genetex.com).