

## Vesicular Acetylcholine Transporter antibody

**Cat. No. GTX133251**

<b>Host</b>	Rabbit
<b>Clonality</b>	Polyclonal
<b>Isotype</b>	IgG
<b>Applications</b>	IHC-P, IHC-Fr
<b>Reactivity</b>	Mouse, Rat

**Package**  
100 µl, 25 µl

## Applications

**Application Note**

\*Optimal dilutions/concentrations should be determined by the researcher.

Suggested dilution	Recommended dilution
IHC-P	1:100-1:1000
IHC-Fr	1:100-1:1000

Not tested in other applications.

## Properties

<b>Form</b>	Liquid
<b>Buffer</b>	PBS, 20% Glycerol
<b>Preservative</b>	0.025% ProClin 300
<b>Storage</b>	Store as concentrated solution. Centrifuge briefly prior to opening vial. For short-term storage (1-2 weeks), store at 4°C. For long-term storage, aliquot and store at -20°C or below. Avoid multiple freeze-thaw cycles.
<b>Concentration</b>	1.83 mg/ml (Please refer to the vial label for the specific concentration.)
<b>Immunogen</b>	Recombinant protein encompassing a sequence within the C-terminus region of mouse Vesicular Acetylcholine Transporter. The exact sequence is proprietary.
<b>Purification</b>	Purified by antigen-affinity chromatography.
<b>Conjugation</b>	Unconjugated

**Note**

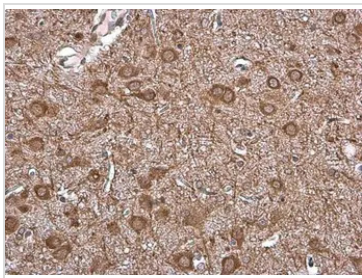
For laboratory research use only. Not for any clinical, therapeutic, or diagnostic use in humans or animals. Not for animal or human consumption.

Purchasers shall not, and agree not to enable third parties to, analyze, copy, reverse engineer or otherwise attempt to determine the structure or sequence of the product.



For full product information, images and publications, please visit our [website](#).

## DATA IMAGES

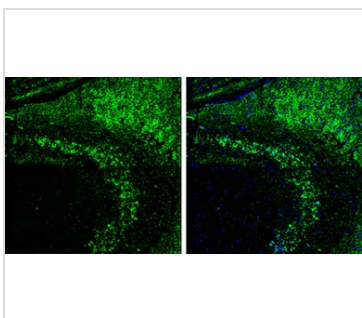
**GTX133251 IHC-P Image**

Vesicular Acetylcholine Transporter antibody detects Vesicular Acetylcholine Transporter protein at cell membrane and cytoplasm by immunohistochemical analysis.

Sample: Paraffin-embedded rat brain.

Vesicular Acetylcholine Transporter stained by Vesicular Acetylcholine Transporter antibody (GTX133251) diluted at 1:500.

Antigen Retrieval: Citrate buffer, pH 6.0, 15 min

**GTX133251 IHC-Fr Image**

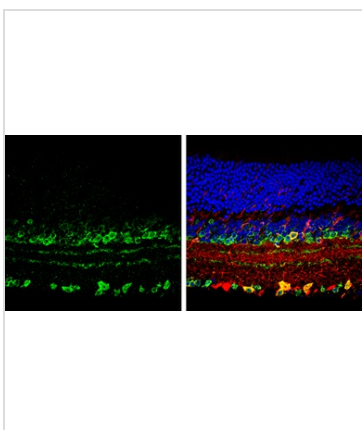
Vesicular Acetylcholine Transporter antibody detects Vesicular Acetylcholine Transporter protein by immunohistochemical analysis.

Sample: Frozen-sectioned mouse hippocampus.

Green: Vesicular Acetylcholine Transporter stained by Vesicular Acetylcholine Transporter antibody (GTX133251) diluted at 1:250.

Blue: Fluoroshield with DAPI (GTX30920).

Antigen Retrieval: Citrate buffer, pH 6.0, 10 min

**GTX133251 IHC-P Image**

Vesicular Acetylcholine Transporter antibody detects Vesicular Acetylcholine Transporter protein by immunohistochemical analysis.

Samples: Paraffin-embedded mouse retina.

Green: Vesicular Acetylcholine Transporter protein stained by Vesicular Acetylcholine Transporter antibody (GTX133251) diluted at 1:250.

Red: beta Tubulin 3/ Tuj1, a marker, stained by beta Tubulin 3/ Tuj1 antibody [GT1338] (GTX631831) diluted at 1:500.

Blue: Fluoroshield with DAPI (GTX30920).

Antigen Retrieval: Citrate buffer, pH 6.0, 15 min



For full product information, images and publications, please visit our [website](#).