

vGluT3 antibody

Cat. No. GTX133267

Host	Rabbit
Clonality	Polyclonal
Isotype	IgG
Applications	IHC-P, IHC-Fr
Reactivity	Mouse

★★★★★ Review (1)

Package
100 µl, 25 µl

Applications

Application Note

*Optimal dilutions/concentrations should be determined by the researcher.

Suggested dilution	Recommended dilution
IHC-P	1:100-1:1000
IHC-Fr	Assay dependent

Not tested in other applications.

Properties

Form	Liquid
Buffer	PBS, 1% BSA, 20% Glycerol
Preservative	0.025% ProClin 300
Storage	Store as concentrated solution. Centrifuge briefly prior to opening vial. For short-term storage (1-2 weeks), store at 4°C. For long-term storage, aliquot and store at -20°C or below. Avoid multiple freeze-thaw cycles.
Concentration	0.34 mg/ml (Please refer to the vial label for the specific concentration.)
Immunogen	Carrier-protein conjugated synthetic peptide encompassing a sequence within the C-terminus region of mouse vGluT3. The exact sequence is proprietary.
Purification	Purified by antigen-affinity chromatography.
Conjugation	Unconjugated

Note

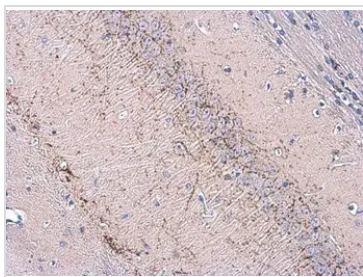
For laboratory research use only. Not for any clinical, therapeutic, or diagnostic use in humans or animals. Not for animal or human consumption.

Purchasers shall not, and agree not to enable third parties to, analyze, copy, reverse engineer or otherwise attempt to determine the structure or sequence of the product.



For full product information, images and publications, please visit our [website](#).

DATA IMAGES



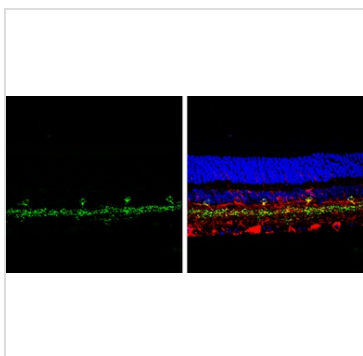
GTX133267 IHC-P Image

vGluT3 antibody detects vGluT3 protein at cell membrane by immunohistochemical analysis.

Sample: Paraffin-embedded mouse hippocampus.

vGluT3 stained by vGluT3 antibody (GTX133267) diluted at 1:500.

Antigen Retrieval: Citrate buffer, pH 6.0, 15 min



GTX133267 IHC-P Image

vGluT3 antibody detects vGluT3 protein by immunohistochemical analysis.

Samples: Paraffin-embedded mouse retina.

Green: vGluT3 protein stained by vGluT3 antibody (GTX133267) diluted at 1:250.

Red: beta Tubulin 3/ Tuj1, a marker, stained by beta Tubulin 3/ Tuj1 antibody [GT1338] (GTX631831) diluted at 1:500.

Blue: Fluoroshield with DAPI (GTX30920).

Antigen Retrieval: Citrate buffer, pH 6.0, 15 min



For full product information, images and publications, please visit our [website](https://www.genetex.com).