

CASPR antibody

Cat. No. GTX133272

Host	Rabbit
Clonality	Polyclonal
Isotype	IgG
Applications	WB, IHC-P
Reactivity	Mouse, Rat

Package
100 µl, 25 µl

Applications

Application Note

*Optimal dilutions/concentrations should be determined by the researcher.

Suggested dilution	Recommended dilution
WB	1:500-1:3000
IHC-P	1:100-1:1000

Not tested in other applications.

Calculated MW 156 kDa. ([Note](#))

Properties

Form	Liquid
Buffer	PBS, 20% Glycerol
Preservative	0.025% ProClin 300
Storage	Store as concentrated solution. Centrifuge briefly prior to opening vial. For short-term storage (1-2 weeks), store at 4°C. For long-term storage, aliquot and store at -20°C or below. Avoid multiple freeze-thaw cycles.
Concentration	0.53 mg/ml (Please refer to the vial label for the specific concentration.)
Immunogen	Recombinant protein encompassing a sequence within the Intracellular domain of mouse CASPR. The exact sequence is proprietary.
Purification	Purified by antigen-affinity chromatography.
Conjugation	Unconjugated

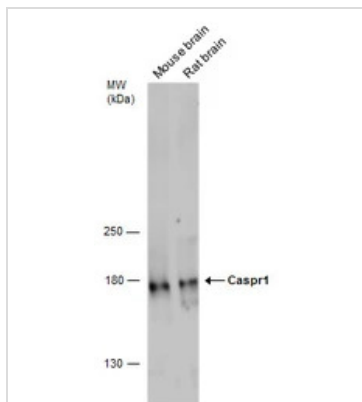
Note

For laboratory research use only. Not for any clinical, therapeutic, or diagnostic use in humans or animals. Not for animal or human consumption.

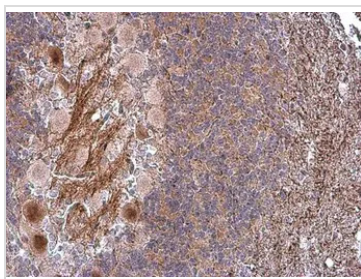
Purchasers shall not, and agree not to enable third parties to, analyze, copy, reverse engineer or otherwise attempt to determine the structure or sequence of the product.



For full product information, images and publications, please visit our [website](#).

DATA IMAGES

GTX133272 WB Image

Various tissue extracts (75 µg) were separated by 5% SDS-PAGE, and the membrane was blotted with Caspr1 antibody (GTX133272) diluted at 1:1000.

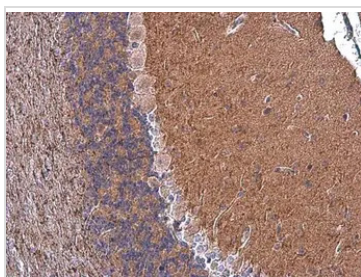

GTX133272 IHC-P Image

CASPR antibody detects CASPR protein at cell membrane and cytoplasm in rat brain by immunohistochemical analysis.

Sample: Paraffin-embedded rat brain.

CASPR antibody (GTX133272) diluted at 1:1000.

Antigen Retrieval: Citrate buffer, pH 6.0, 15 min

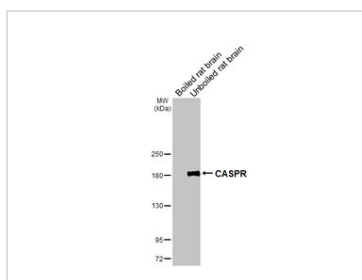

GTX133272 IHC-P Image

CASPR antibody detects CASPR protein at cell membrane and cytoplasm in mouse brain by immunohistochemical analysis.

Sample: Paraffin-embedded mouse brain.

CASPR antibody (GTX133272) diluted at 1:1000.

Antigen Retrieval: Citrate buffer, pH 6.0, 15 min


GTX133272 WB Image

Boiled and unboiled rat tissue extracts (50 µg) were separated by 5% SDS-PAGE, and the membrane was blotted with CASPR antibody (GTX133272) diluted at 1:1000. The HRP-conjugated anti-rabbit IgG antibody (GTX213110-01) was used to detect the primary antibody.



For full product information, images and publications, please visit our [website](https://www.genetex.com).