

CASK antibody

Cat. No. GTX133275

Host	Rabbit
Clonality	Polyclonal
Isotype	IgG
Applications	WB, ICC/IF, IHC-P
Reactivity	Mouse, Rat

Package
100 µl, 25 µl

Applications

Application Note

*Optimal dilutions/concentrations should be determined by the researcher.

Suggested dilution	Recommended dilution
WB	1:1000-1:10000
ICC/IF	1:100-1:1000
IHC-P	1:100-1:1000

Not tested in other applications.

Calculated MW 105 kDa. ([Note](#))

Properties

Form	Liquid
Buffer	PBS, 20% Glycerol
Preservative	0.025% ProClin 300
Storage	Store as concentrated solution. Centrifuge briefly prior to opening vial. For short-term storage (1-2 weeks), store at 4°C. For long-term storage, aliquot and store at -20°C or below. Avoid multiple freeze-thaw cycles.
Concentration	0.77 mg/ml (Please refer to the vial label for the specific concentration.)
Immunogen	Recombinant protein encompassing a sequence within the center region of mouse CASK. The exact sequence is proprietary.
Purification	Purified by antigen-affinity chromatography.
Conjugation	Unconjugated

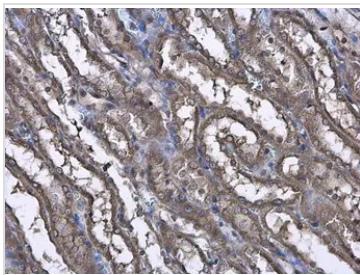
Note

For laboratory research use only. Not for any clinical, therapeutic, or diagnostic use in humans or animals. Not for animal or human consumption.

Purchasers shall not, and agree not to enable third parties to, analyze, copy, reverse engineer or otherwise attempt to determine the structure or sequence of the product.



For full product information, images and publications, please visit our [website](#).

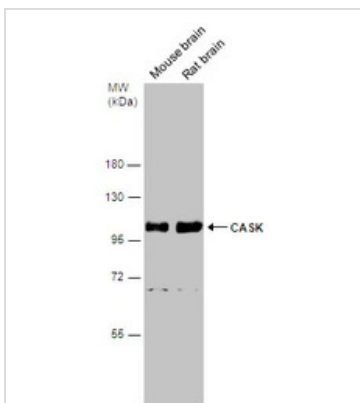
DATA IMAGES

GTX133275 IHC-P Image

CASK antibody detects CASK protein at cytoplasm in rat kidney by immunohistochemical analysis.

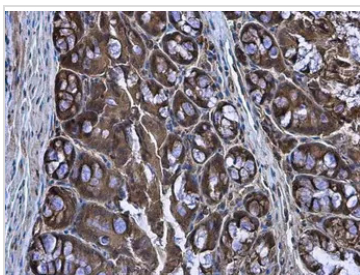
Sample: Paraffin-embedded rat kidney.

CASK antibody (GTX133275) diluted at 1:500.

Antigen Retrieval: Citrate buffer, pH 6.0, 15 min


GTX133275 WB Image

Various tissue extracts (50 µg) were separated by 7.5% SDS-PAGE, and the membrane was blotted with CASK antibody (GTX133275) diluted at 1:5000.

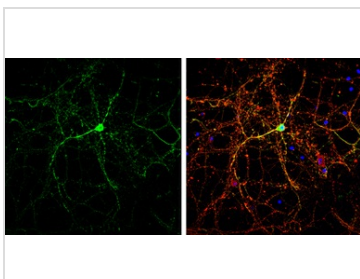

GTX133275 IHC-P Image

CASK antibody detects CASK protein at cytoplasm in mouse colon by immunohistochemical analysis.

Sample: Paraffin-embedded mouse colon.

CASK antibody (GTX133275) diluted at 1:500.

Antigen Retrieval: Citrate buffer, pH 6.0, 15 min


GTX133275 ICC/IF Image

CASK antibody detects CASK protein by immunofluorescent analysis.

Sample: DIV14 rat E18 primary cortical neurons were fixed in 4% paraformaldehyde at RT for 15 min.

Green: CASK protein stained by CASK antibody (GTX133275) diluted at 1:500.

Red: beta Tubulin 3/ Tuj1, stained by beta Tubulin 3/ Tuj1 antibody [GT1338] (GTX631831) diluted at 1:500.

Blue: Fluoroshield with DAPI (GTX30920).



For full product information, images and publications, please visit our [website](https://www.genetex.com).