

Grp75 antibody

Cat. No. GTX133283

Host	Rabbit
Clonality	Polyclonal
Isotype	IgG
Application	WB, ICC/IF, IHC-P, IHC-Fr
Reactivity	Human, Mouse, Rat, Drosophila

Package

100 µl, 25 µl

APPLICATION

Application Note

*Optimal dilutions/concentrations should be determined by the researcher.

Suggested dilution	Recommended dilution
WB	1:500-1:3000
ICC/IF	1:100-1:1000
IHC-P	1:100-1:1000
IHC-Fr	1:100-1:1000

Not tested in other applications.

Calculated MW 73 kDa. ([Note](#))

PROPERTIES

Form	Liquid
Buffer	PBS, 20% Glycerol
Preservative	0.025% ProClin 300
Storage	Store as concentrated solution. Centrifuge briefly prior to opening vial. For short-term storage (1-2 weeks), store at 4°C. For long-term storage, aliquot and store at -20°C or below. Avoid multiple freeze-thaw cycles.
Concentration	0.59 mg/ml (Please refer to the vial label for the specific concentration.)
Immunogen	Recombinant protein encompassing a sequence within the C-terminus region of mouse Grp75. The exact sequence is proprietary.
Purification	Purified by antigen-affinity chromatography.
Conjugation	Unconjugated

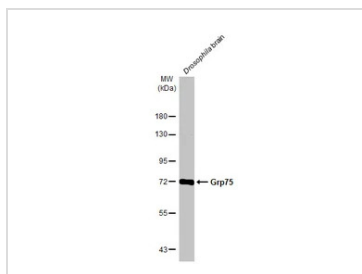


For full product information, images and publications, please visit our [website](#).

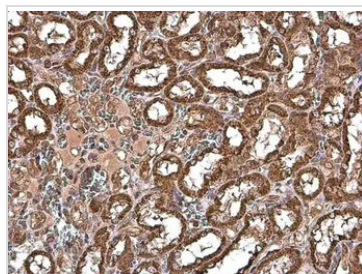
For laboratory research use only. Not for any clinical, therapeutic, or diagnostic use in humans or animals. Not for animal or human consumption.

Note

Purchasers shall not, and agree not to enable third parties to, analyze, copy, reverse engineer or otherwise attempt to determine the structure or sequence of the product.

DATA IMAGES

GTx133283 WB Image

Drosophila tissue extract (50 µg) was separated by 7.5% SDS-PAGE, and the membrane was blotted with Grp75 antibody (GTx133283) diluted at 1:2000. The HRP-conjugated anti-rabbit IgG antibody (GTx213110-01) was used to detect the primary antibody.

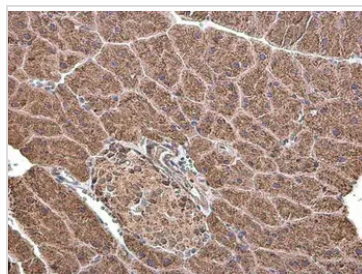

GTx133283 IHC-P Image

Grp75 antibody detects Grp75 protein at cytoplasm in rat kidney by immunohistochemical analysis.

Sample: Paraffin-embedded rat kidney.

Grp75 antibody (GTx133283) diluted at 1:500.

Antigen Retrieval: Citrate buffer, pH 6.0, 15 min

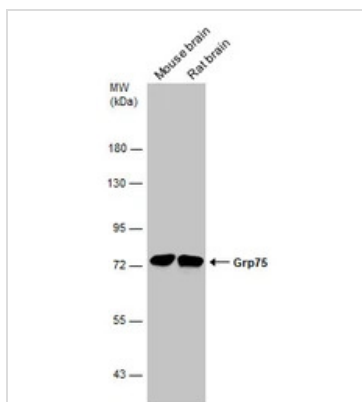

GTx133283 IHC-P Image

Grp75 antibody detects Grp75 protein at cytoplasm in mouse pancreas by immunohistochemical analysis.

Sample: Paraffin-embedded mouse pancreas.

Grp75 antibody (GTx133283) diluted at 1:500.

Antigen Retrieval: Citrate buffer, pH 6.0, 15 min


GTx133283 WB Image

Various tissue extracts (10 µg) were separated by 7.5% SDS-PAGE, and the membrane was blotted with Grp75 antibody (GTx133283) diluted at 1:2000.



For full product information, images and publications, please visit our [website](https://www.genetex.com).