

## Zika virus prM protein antibody

Cat. No. GTX133305

Host	Rabbit
Clonality	Polyclonal
Isotype	IgG
Application	WB, ICC/IF, IP
Reactivity	Zika virus

Reference ( 24 )

★★★★★ Review ( 2 )

Package

100 µl, 25 µl

## APPLICATION

## Application Note

\*Optimal dilutions/concentrations should be determined by the researcher.

Suggested dilution	Recommended dilution
WB	1:500-1:3000
ICC/IF	1:100-1:1000
IP	Assay dependent

Not tested in other applications.

Calculated MW 19 kDa. ( [Note](#) )

## PROPERTIES

Form	Liquid
Buffer	PBS, 20% Glycerol
Preservative	0.025% ProClin 300
Storage	Store as concentrated solution. Centrifuge briefly prior to opening vial. For short-term storage (1-2 weeks), store at 4°C. For long-term storage, aliquot and store at -20°C or below. Avoid multiple freeze-thaw cycles.
Concentration	1.02 mg/ml (Please refer to the vial label for the specific concentration.)
Immunogen	Carrier-protein conjugated synthetic peptide encompassing a sequence within the N-terminus region of Zika virus prM protein (Zika virus (strain H/PF/2013)). The exact sequence is proprietary.
Purification	Purified by antigen-affinity chromatography.
Conjugation	Unconjugated

## Note

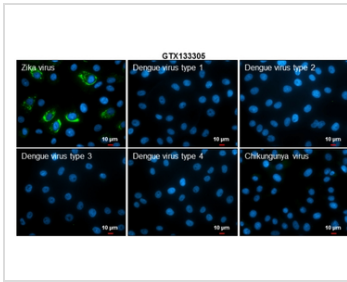
For laboratory research use only. Not for any clinical, therapeutic, or diagnostic use in humans or animals. Not for animal or human consumption.

Purchasers shall not, and agree not to enable third parties to, analyze, copy, reverse engineer or otherwise attempt to determine the structure or sequence of the product.



For full product information, images and publications, please visit our [website](#).

DATA IMAGES



**GTX133305 ICC/IF Image**

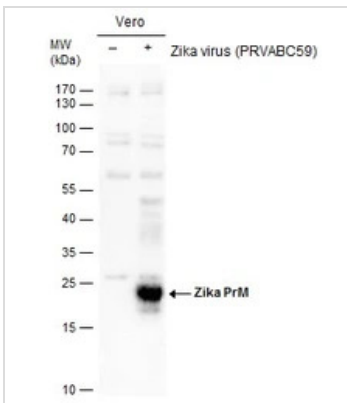
Immunofluorescent analysis of arboviruses infected cells using Zika virus prM protein antibody (GTX133305).

Samples: EUROIMMUN Arboviral Fever Mosaic 2 slide (FR 2668-1010-1).

Green: Zika virus prM protein antibody (GTX133305) diluted at 1:500.

Blue: Hoechst 33342 staining.

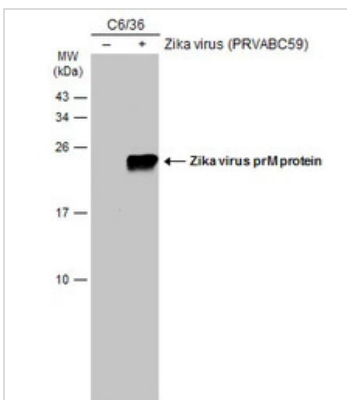
Scale bar = 10 μm.



**GTX133305 WB Image**

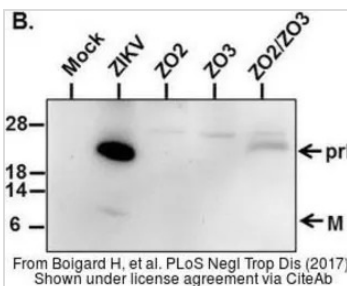
Non-infected (–) and infected (+) Vero cells (15 μg) were separated by gradient gel, and the membrane was blotted with Zika PrM antibody (GTX133305) diluted at 1:2000. The HRP-conjugated anti-rabbit IgG antibody (GTX213110-01) was used to detect the primary antibody.

This image was provided courtesy of cooperative research laboratories.



**GTX133305 WB Image**

Non-infected (–) and infected (+) C6/36 whole cell extracts (30 μg) were separated by 15% SDS-PAGE, and the membrane was blotted with Zika virus prM protein antibody (GTX133305) diluted at 1:2000. The HRP-conjugated anti-rabbit IgG antibody (GTX213110-01) was used to detect the primary antibody.



**GTX133305 WB Image**

The data was published in the journal PLoS Negl Trop Dis in 2017. [PMID: 28481898](https://doi.org/10.1371/journal.pntd.2848189)



For full product information, images and publications, please visit our [website](https://www.genetex.com).