

Zika virus NS3 protein antibody

Cat. No. GTX133309

Host	Rabbit
Clonality	Polyclonal
Isotype	IgG
Applications	WB, ICC/IF, IHC-P
Reactivity	Zika virus

References (61)

★★★★★ Review (3)

Package

100 µl, 25 µl

Applications

Application Note

*Optimal dilutions/concentrations should be determined by the researcher.

Suggested dilution	Recommended dilution
WB	1:500-1:10000
ICC/IF	1:100-1:1000
IHC-P	Assay dependent

Not tested in other applications.

Calculated MW 69 kDa. ([Note](#))

Product Note This antibody was raised against the Zika virus NS3 protein (strain: H/PF/2013), and the immunogen shares 100% sequence identity with strain MR 766.

Properties

Form	Liquid
Buffer	PBS, 20% Glycerol
Preservative	0.025% ProClin 300
Storage	Store as concentrated solution. Centrifuge briefly prior to opening vial. For short-term storage (1-2 weeks), store at 4°C. For long-term storage, aliquot and store at -20°C or below. Avoid multiple freeze-thaw cycles.
Concentration	1 mg/ml (Please refer to the vial label for the specific concentration.)
Immunogen	Carrier-protein conjugated synthetic peptide encompassing a sequence within the N-terminus region of Zika virus NS3 protein (Zika virus (strain H/PF/2013)). The exact sequence is proprietary.
Purification	Purified by antigen-affinity chromatography.
Conjugation	Unconjugated



For full product information, images and publications, please visit our [website](#).

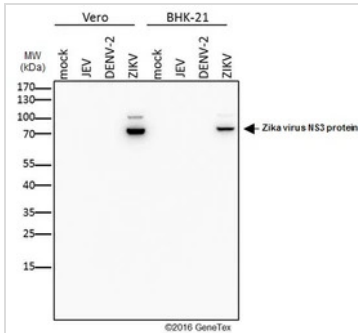
Date 2025 / 12 / 18 Page 1 of 2

For laboratory research use only. Not for any clinical, therapeutic, or diagnostic use in humans or animals. Not for animal or human consumption.

Note

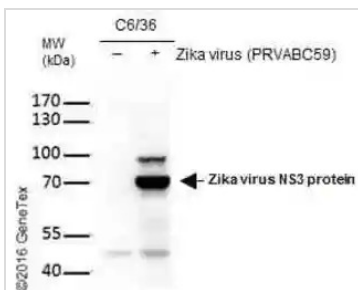
Purchasers shall not, and agree not to enable third parties to, analyze, copy, reverse engineer or otherwise attempt to determine the structure or sequence of the product.

DATA IMAGES



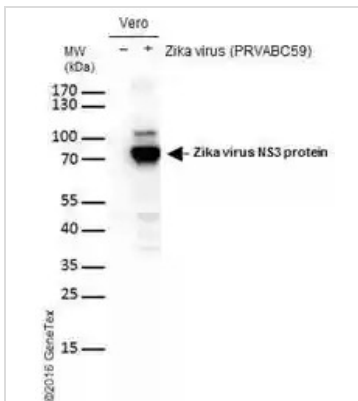
GTx133309 WB Image

Mock and infected Vero and BHK-21 whole cell extracts (20 µg) were separated by gradient gel, and the membrane was blotted with Zika virus NS3 protein antibody (GTx133309) diluted at 1:4000. This image was provided courtesy of cooperative research laboratories.



GTx133309 WB Image

Non-infected (-) and infected (+) C6/36 cells (20 µg) were separated by gradient gel, and the membrane was blotted with Zika virus NS3 protein antibody (GTx133309) diluted at 1:4000. The HRP-conjugated anti-rabbit IgG antibody (GTx213110-01) was used to detect the primary antibody. This image was provided courtesy of cooperative research laboratories.



GTx133309 WB Image

Non-infected (-) and infected (+) vero cells (15 µg) were separated by gradient gel, and the membrane was blotted with Zika virus NS3 protein antibody (GTx133309) diluted at 1:2000. The HRP-conjugated anti-rabbit IgG antibody (GTx213110-01) was used to detect the primary antibody. This image was provided courtesy of cooperative research laboratories.



For full product information, images and publications, please visit our [website](https://www.genetex.com).