

Zika virus Capsid protein antibody

Cat. No. GTX133317

Host	Rabbit
Clonality	Polyclonal
Isotype	IgG
Application	WB, ICC/IF, IHC-P (cell pellet)
Reactivity	Zika virus

Reference (35)

★★★★★ Review (1)

Package

100 µl, 25 µl

APPLICATION

Application Note

*Optimal dilutions/concentrations should be determined by the researcher.

Suggested dilution	Recommended dilution
WB	1:500-1:20000
ICC/IF	1:100-1:1000
IHC-P (cell pellet)	Assay dependent

Not tested in other applications.

Calculated MW 12 kDa. ([Note](#))

PROPERTIES

Form	Liquid
Buffer	PBS, 20% Glycerol
Preservative	0.025% ProClin 300
Storage	Store as concentrated solution. Centrifuge briefly prior to opening vial. For short-term storage (1-2 weeks), store at 4°C. For long-term storage, aliquot and store at -20°C or below. Avoid multiple freeze-thaw cycles.
Concentration	1.5 mg/ml (Please refer to the vial label for the specific concentration.)
Immunogen	Full length Zika virus Capsid recombinant protein. (Zika virus (strain H/PF/2013))
Purification	Purified by antigen-affinity chromatography.
Conjugation	Unconjugated

Note

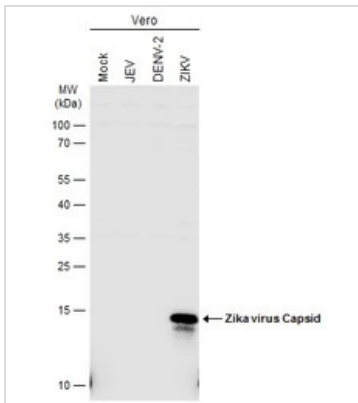
For laboratory research use only. Not for any clinical, therapeutic, or diagnostic use in humans or animals. Not for animal or human consumption.

Purchasers shall not, and agree not to enable third parties to, analyze, copy, reverse engineer or otherwise attempt to determine the structure or sequence of the product.



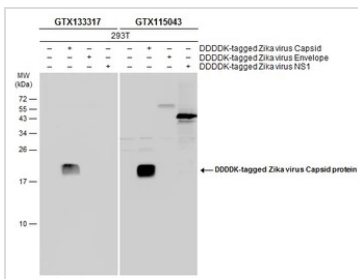
For full product information, images and publications, please visit our [website](#).

DATA IMAGES



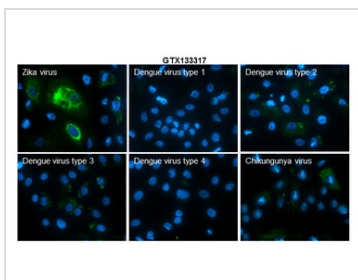
GTX133317 WB Image

Mock and infected Vero whole cell extracts (20 µg) were separated by 4-20% SDS-PAGE, and the membrane was blotted with Zika virus Capsid protein (GTX133317) diluted at 1:2500.



GTX133317 WB Image

Non-transfected (-) and transfected (+) 293T whole cell extracts (50 µg) were separated by 15% SDS-PAGE, and the membranes were blotted with Zika virus Capsid protein antibody (GTX133317) diluted at 1:5000 and DDDDK tag antibody (GTX115043) diluted at 1:2000. The HRP-conjugated anti-rabbit IgG antibody (GTX213110-01) was used to detect the primary antibody.



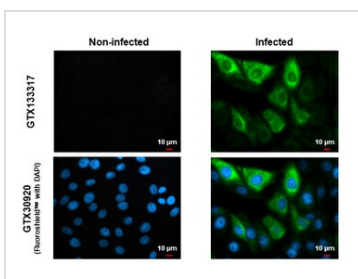
GTX133317 ICC/IF Image

Immunofluorescent analysis of arboviruses infected cells using Zika virus Capsid protein antibody (GTX133317).

Samples: EUROIMMUN Arboviral Fever Mosaic 2 slide (FR 2668-1010-1).

Green: Zika virus Capsid protein antibody (GTX133317) diluted at 1:500.

Blue: Hoechst 33342 staining.



GTX133317 ICC/IF Image

Immunofluorescent analysis of mock and Zika virus-infected cells using Zika virus Capsid protein antibody (GTX133317).

Sample: Zika virus non-infected and infected cells slide.

Green: Zika virus Capsid protein antibody (GTX133317) diluted at 1:100.

Blue: Fluoroshield with DAPI (GTX30920).



For full product information, images and publications, please visit our [website](https://www.genetex.com).