

# Zika virus NS2B protein antibody

**Cat. No. GTX133318**

<b>Host</b>	Rabbit
<b>Clonality</b>	Polyclonal
<b>Isotype</b>	IgG
<b>Applications</b>	WB, ICC/IF
<b>Reactivity</b>	Zika virus

References ( 4 )

★★★★★ Review ( 1 )

Package

100 µl, 25 µl

## Applications

### Application Note

\*Optimal dilutions/concentrations should be determined by the researcher.

Suggested dilution	Recommended dilution
WB	1:1000-1:20000
ICC/IF	1:100-1:1000

Not tested in other applications.

**Calculated MW** 14 kDa. ( [Note](#) )

## Properties

<b>Form</b>	Liquid
<b>Buffer</b>	PBS, 20% Glycerol
<b>Preservative</b>	0.025% ProClin 300
<b>Storage</b>	Store as concentrated solution. Centrifuge briefly prior to opening vial. For short-term storage (1-2 weeks), store at 4°C. For long-term storage, aliquot and store at -20°C or below. Avoid multiple freeze-thaw cycles.
<b>Concentration</b>	1 mg/ml (Please refer to the vial label for the specific concentration.)
<b>Immunogen</b>	Full length Zika virus NS2B recombinant protein. (Zika virus (strain H/PF/2013))
<b>Purification</b>	Purified by antigen-affinity chromatography.
<b>Conjugation</b>	Unconjugated

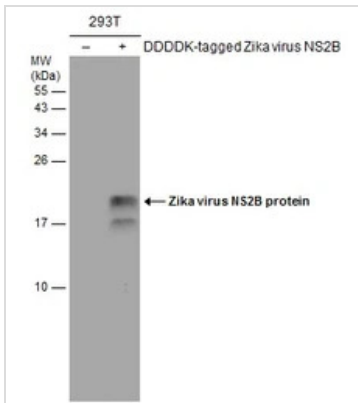
### Note

For laboratory research use only. Not for any clinical, therapeutic, or diagnostic use in humans or animals. Not for animal or human consumption.

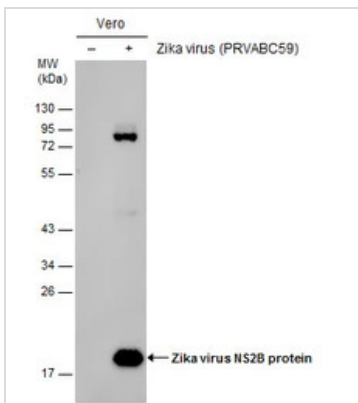
Purchasers shall not, and agree not to enable third parties to, analyze, copy, reverse engineer or otherwise attempt to determine the structure or sequence of the product.



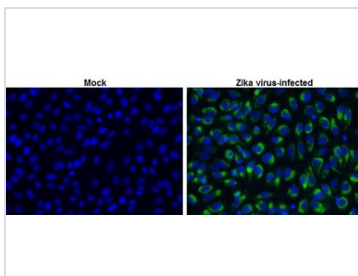
For full product information, images and publications, please visit our [website](#).

**DATA IMAGES**

**GTX133318 WB Image**

Non-transfected (-) and transfected (+) 293T whole cell extracts (30 µg) were separated by 15% SDS-PAGE, and the membrane was blotted with Zika virus NS2B protein antibody (GTX133318) diluted at 1:4000. The HRP-conjugated anti-rabbit IgG antibody (GTX213110-01) was used to detect the primary antibody.


**GTX133318 WB Image**

Non-infected (-) and infected (+) Vero whole cell extracts (30 µg) were separated by 12% SDS-PAGE, and the membrane was blotted with Zika virus NS2B protein antibody (GTX133318) diluted at 1:15000.


**GTX133318 ICC/IF Image**

Zika virus NS2B protein antibody detects Zika virus NS2B protein at cytoplasm by immunofluorescent analysis.

Sample: Vero cells were fixed in 4% paraformaldehyde at RT for 30 min.

Green: Zika virus NS2B stained by Zika virus NS2B protein antibody (GTX133318) diluted at 1:1000.

Blue: nuclear staining.



For full product information, images and publications, please visit our [website](https://www.genetex.com).