

Zika virus NS4B protein antibody

Cat. No. GTX133321

Host	Rabbit
Clonality	Polyclonal
Isotype	IgG
Applications	WB, ICC/IF, IHC-P (cell pellet)
Reactivity	Zika virus

References (7)

★★★★★ Review (1)

Package

100 µl, 25 µl

Applications

Application Note

*Optimal dilutions/concentrations should be determined by the researcher.

Suggested dilution	Recommended dilution
WB	1:500-1:3000
ICC/IF	1:100-1:1000
IHC-P (cell pellet)	Assay dependent

Not tested in other applications.

Calculated MW 26 kDa. ([Note](#))

Properties

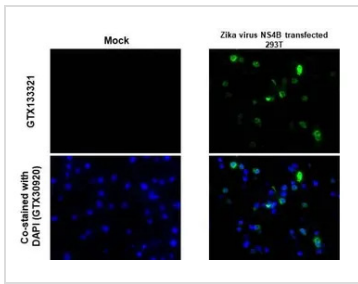
Form	Liquid
Buffer	PBS, 1% BSA, 20% Glycerol
Preservative	0.025% ProClin 300
Storage	Store as concentrated solution. Centrifuge briefly prior to opening vial. For short-term storage (1-2 weeks), store at 4°C. For long-term storage, aliquot and store at -20°C or below. Avoid multiple freeze-thaw cycles.
Concentration	0.31 mg/ml (Please refer to the vial label for the specific concentration.)
Immunogen	Full length Zika virus NS4B recombinant protein. (Zika virus (strain H/PF/2013))
Purification	Purified by antigen-affinity chromatography.
Conjugation	Unconjugated

Note

For laboratory research use only. Not for any clinical, therapeutic, or diagnostic use in humans or animals. Not for animal or human consumption.

Purchasers shall not, and agree not to enable third parties to, analyze, copy, reverse engineer or otherwise attempt to determine the structure or sequence of the product.

For full product information, images and publications, please visit our [website](#).

DATA IMAGES

GTX133321 IHC-P (cell pellet) Image

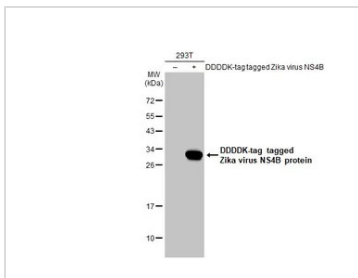
Zika virus NS4B protein antibody detects Zika virus NS4B protein at cytoplasm by immunohistochemical analysis.

Sample: Paraffin-embedded mock and Zika virus NS4B transfected 293T.

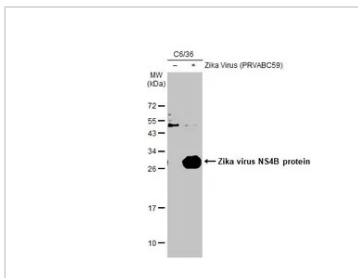
Green: Zika virus NS4B stained by Zika virus NS4B protein antibody (GTX133321) diluted at 1:1000.

Blue: Fluoroshield with DAPI (GTX30920).

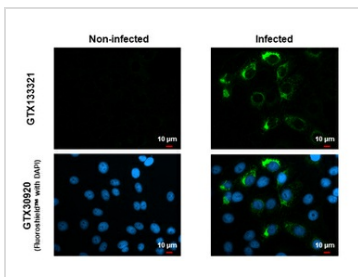
Antigen Retrieval: Citrate buffer, pH 6.0, 15 min


GTX133321 WB Image

Non-transfected (–) and transfected (+) 293T whole cell extracts (30 µg) were separated by 12% SDS-PAGE, and the membrane was blotted with Zika virus NS4B protein antibody (GTX133321) diluted at 1:5000. The HRP-conjugated anti-rabbit IgG antibody (GTX213110-01) was used to detect the primary antibody.


GTX133321 WB Image

Non-infected (–) and infected (+) C6/36 whole cell extracts (30 µg) were separated by 12% SDS-PAGE, and the membrane was blotted with Zika virus NS4B protein antibody (GTX133321) diluted at 1:1000. The HRP-conjugated anti-rabbit IgG antibody (GTX213110-01) was used to detect the primary antibody.

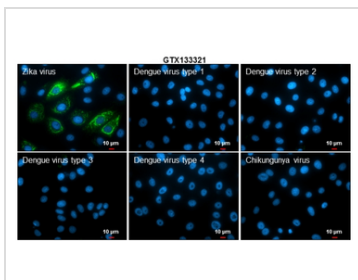

GTX133321 ICC/IF Image

Immunofluorescent analysis of mock and Zika virus-infected cells using Zika virus NS4B protein antibody (GTX133321).

Sample: Zika virus non-infected and infected cells slide.

Green: Zika virus NS4B protein antibody (GTX133321) diluted at 1:100.

Blue: Fluoroshield with DAPI (GTX30920).


GTX133321 ICC/IF Image

Immunofluorescent analysis of arboviruses infected cells using Zika virus NS4B protein antibody (GTX133321).

Samples: EUROIMMUN Arboviral Fever Mosaic 2 slide (FR 2668-1010-1).

Green: Zika virus NS4B protein antibody (GTX133321) diluted at 1:500.

Blue: Hoechst 33342 staining.

Scale bar = 10 µm.



For full product information, images and publications, please visit our [website](https://www.genetex.com).