

Zika virus NS1 protein antibody

Cat. No. GTX133323

Host	Rabbit
Clonality	Polyclonal
Isotype	IgG
Applications	WB, ICC/IF, ELISA, Sandwich ELISA
Reactivity	Zika virus

References (6)

★★★★★ Review (1)

Package

100 µl, 25 µl

Applications

Application Note

*Optimal dilutions/concentrations should be determined by the researcher.

Suggested dilution	Recommended dilution
WB	1:1000-1:10000
ICC/IF	1:100-1:1000
ELISA	1:1000-1:10000
Sandwich ELISA	Assay dependent

Note : Capture : GTX634158, Detection: GTX133323

Not tested in other applications.

Calculated MW 40 kDa. ([Note](#))

Properties

Form	Liquid
Buffer	PBS, 20% Glycerol
Preservative	0.025% ProClin 300
Storage	Store as concentrated solution. Centrifuge briefly prior to opening vial. For short-term storage (1-2 weeks), store at 4°C. For long-term storage, aliquot and store at -20°C or below. Avoid multiple freeze-thaw cycles.
Concentration	1 mg/ml (Please refer to the vial label for the specific concentration.)
Immunogen	Recombinant protein encompassing a sequence within the N-terminus region of Zika virus NS1 protein (Zika virus (strain H/PF/2013)). The exact sequence is proprietary.
Purification	Purified by antigen-affinity chromatography.
Conjugation	Unconjugated



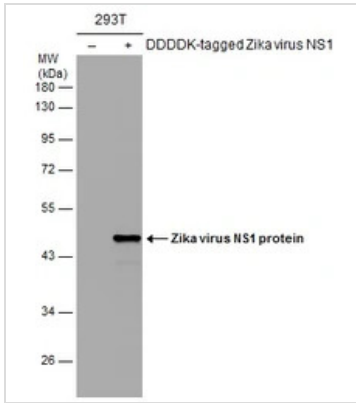
For full product information, images and publications, please visit our [website](#).

For laboratory research use only. Not for any clinical, therapeutic, or diagnostic use in humans or animals. Not for animal or human consumption.

Note

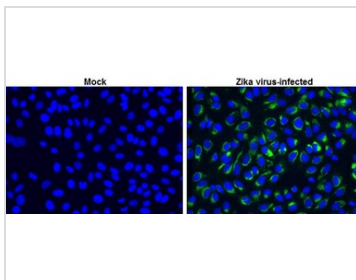
Purchasers shall not, and agree not to enable third parties to, analyze, copy, reverse engineer or otherwise attempt to determine the structure or sequence of the product.

DATA IMAGES



GTX133323 WB Image

Non-transfected (-) and transfected (+) 293T whole cell extracts (30 µg) were separated by 10% SDS-PAGE, and the membrane was blotted with Zika virus NS1 protein antibody (GTX133323) diluted at 1:8000. The HRP-conjugated anti-rabbit IgG antibody (GTX213110-01) was used to detect the primary antibody.



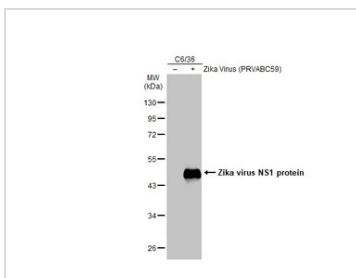
GTX133323 ICC/IF Image

Zika virus NS1 protein antibody detects Zika virus NS1 protein at cytoplasm by immunofluorescent analysis.

Sample: Vero cells were fixed in 4% paraformaldehyde at RT for 30 min.

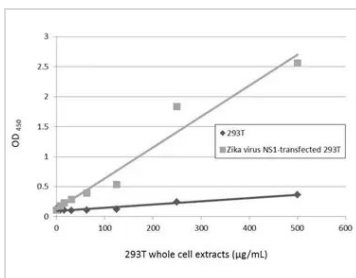
Green: Zika virus NS1 stained by Zika virus NS1 protein antibody (GTX133323) diluted at 1:1000.

Blue: nuclear staining.



GTX133323 WB Image

Non-infected (-) and infected (+) C6/36 whole cell extracts (30 µg) were separated by 10% SDS-PAGE, and the membrane was blotted with Zika virus NS1 protein antibody (GTX133323) diluted at 1:10000. The HRP-conjugated anti-rabbit IgG antibody (GTX213110-01) was used to detect the primary antibody.



GTX133323 ELISA Image

Sandwich ELISA detection of non-transfected and transfected 293T whole cell extracts using GTX634158 as capture antibody at concentration of 5 µg/mL and GTX133323 as detection antibody at concentration of 1 µg/mL. Rabbit IgG antibody (HRP) (GTX213110-01) was diluted at 1:10000 and used to detect the primary antibody.



For full product information, images and publications, please visit our [website](https://www.genetex.com).