

# Zika virus NS1 protein antibody

**Cat. No. GTX133324**

<b>Host</b>	Rabbit
<b>Clonality</b>	Polyclonal
<b>Isotype</b>	IgG
<b>Applications</b>	WB, ICC/IF, ELISA, Sandwich ELISA
<b>Reactivity</b>	Zika virus

**Package**  
100 µl, 25 µl

## Applications

### Application Note

\*Optimal dilutions/concentrations should be determined by the researcher.

Suggested dilution	Recommended dilution
WB	1:500-1:20000
ICC/IF	1:100-1:1000
ELISA	1:1000-1:10000
Sandwich ELISA	Assay dependent

**Note : Capture : GTX634158 / GTX133324, Detection : GTX133324 / GTX634158**

Not tested in other applications.

**Calculated MW** 40 kDa. ( [Note](#) )

## Properties

<b>Form</b>	Liquid
<b>Buffer</b>	PBS, 20% Glycerol
<b>Preservative</b>	0.025% ProClin 300
<b>Storage</b>	Store as concentrated solution. Centrifuge briefly prior to opening vial. For short-term storage (1-2 weeks), store at 4°C. For long-term storage, aliquot and store at -20°C or below. Avoid multiple freeze-thaw cycles.
<b>Concentration</b>	0.93 mg/ml (Please refer to the vial label for the specific concentration.)
<b>Immunogen</b>	Recombinant protein encompassing a sequence within the C-terminus region of Zika virus NS1 protein (Zika virus (strain H/PF/2013)). The exact sequence is proprietary.
<b>Purification</b>	Purified by antigen-affinity chromatography.
<b>Conjugation</b>	Unconjugated



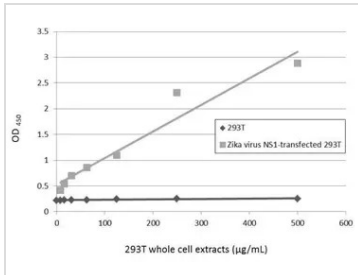
For full product information, images and publications, please visit our [website](#).

For laboratory research use only. Not for any clinical, therapeutic, or diagnostic use in humans or animals. Not for animal or human consumption.

#### Note

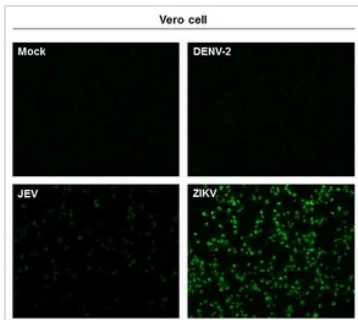
Purchasers shall not, and agree not to enable third parties to, analyze, copy, reverse engineer or otherwise attempt to determine the structure or sequence of the product.

#### DATA IMAGES



#### GTx133324 ELISA Image

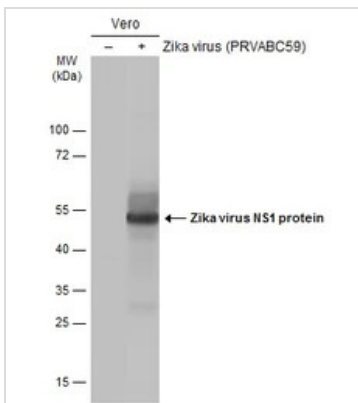
Sandwich ELISA detection of non-transfected and transfected 293T whole cell extracts using GTX634158 as capture antibody at concentration of 5 µg/mL and GTX133324 as detection antibody at concentration of 1 µg/mL. Rabbit IgG antibody (HRP) (GTX213110-01) was diluted at 1:10000 and used to detect the primary antibody.



#### GTx133324 ICC/IF Image

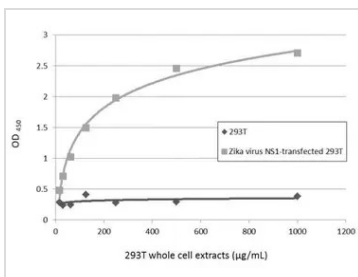
Immunofluorescent analysis of non-infected and infected vero cells using Zika virus NS1 protein antibody (GTx133324).

Green: Zika virus NS1 protein antibody (GTx133324) diluted at 1:500.



#### GTx133324 WB Image

Non-infected (-) and infected (+) Vero whole cell extracts were separated by gradient gel, and the membrane was blotted with Zika virus NS1 protein antibody (GTx133324) diluted at 1:2500.



#### GTx133324 ELISA Image

Sandwich ELISA detection of non-transfected and transfected 293T whole cell extracts using GTX133324 as capture antibody at concentration of 5 µg/mL and GTX634158 as detection antibody at concentration of 1 µg/mL. Mouse IgG antibody (HRP) (GTX213111-01) was diluted at 1:10000 and used to detect the primary antibody.



For full product information, images and publications, please visit our [website](https://www.genetex.com).