

Zika virus Envelope protein antibody

Cat. No. GTX133325

Host	Rabbit
Clonality	Polyclonal
Isotype	IgG
Applications	WB, ICC/IF, ELISA, Sandwich ELISA
Reactivity	Zika virus

References (4)

Package

100 µl, 25 µl

Applications

Application Note

*Optimal dilutions/concentrations should be determined by the researcher.

Suggested dilution	Recommended dilution
WB	1:500-1:3000
ICC/IF	1:100-1:1000
ELISA	1:1000-1:10000
Sandwich ELISA	Assay dependent

Note : Capture : GTX634157 / GTX634155, Detection : GTX133325

Not tested in other applications.

Calculated MW 54 kDa. ([Note](#))

Properties

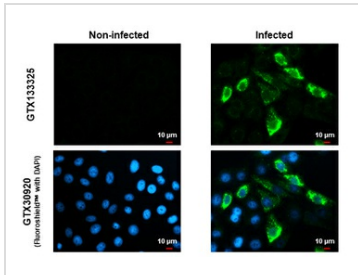
Form	Liquid
Buffer	PBS, 20% Glycerol
Preservative	0.025% ProClin 300
Storage	Store as concentrated solution. Centrifuge briefly prior to opening vial. For short-term storage (1-2 weeks), store at 4°C. For long-term storage, aliquot and store at -20°C or below. Avoid multiple freeze-thaw cycles.
Concentration	1.14 mg/ml (Please refer to the vial label for the specific concentration.)
Immunogen	Recombinant protein encompassing a sequence within the center region of Zika virus Envelope protein (Zika virus (strain H/PF/2013)). The exact sequence is proprietary.
Purification	Purified by antigen-affinity chromatography.
Conjugation	Unconjugated

For full product information, images and publications, please visit our [website](#).

For laboratory research use only. Not for any clinical, therapeutic, or diagnostic use in humans or animals. Not for animal or human consumption.

Note

Purchasers shall not, and agree not to enable third parties to, analyze, copy, reverse engineer or otherwise attempt to determine the structure or sequence of the product.

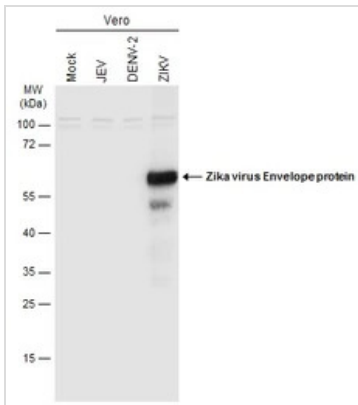
DATA IMAGES

GTx133325 ICC/IF Image

Immunofluorescent analysis of mock and Zika virus-infected cells using Zika virus Envelope protein antibody (GTx133325).

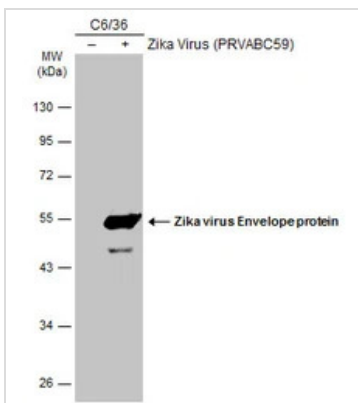
Sample: Zika virus non-infected and infected cells slide.

Green: Zika virus Envelope protein antibody (GTx133325) diluted at 1:100.

Blue: Fluoroshield with DAPI (GTx30920).


GTx133325 WB Image

Mock and infected Vero whole cell extracts were separated by gradient gel, and the membrane was blotted with Zika virus Envelope protein antibody (GTx133325) diluted at 1:2500.


GTx133325 WB Image

Non-infected (-) and infected (+) C6/36 whole cell extracts (30 μg) were separated by 10% SDS-PAGE, and the membrane was blotted with Zika virus Envelope protein antibody (GTx133325) diluted at 1:2000. The HRP-conjugated anti-rabbit IgG antibody (GTx213110-01) was used to detect the primary antibody.



For full product information, images and publications, please visit our [website](https://www.genetex.com).