

Zika virus Envelope protein antibody

Cat. No. GTX133326

Host	Rabbit
Clonality	Polyclonal
Isotype	IgG
Applications	WB, ICC/IF, ELISA, Sandwich ELISA
Reactivity	Zika virus

References (4)

Package

100 µl, 25 µl

Applications

Application Note

*Optimal dilutions/concentrations should be determined by the researcher.

Suggested dilution	Recommended dilution
WB	1:500-1:3000
ICC/IF	1:100-1:1000
ELISA	1:1000-1:10000
Sandwich ELISA	Assay dependent

Note : Capture : GTX634155 / GTX634157 / GTX133326, Detection : GTX133326 / GTX634157 / GTX634155

Not tested in other applications.

Calculated MW 54 kDa. ([Note](#))

Properties

Form	Liquid
Buffer	PBS, 20% Glycerol
Preservative	0.025% ProClin 300
Storage	Store as concentrated solution. Centrifuge briefly prior to opening vial. For short-term storage (1-2 weeks), store at 4°C. For long-term storage, aliquot and store at -20°C or below. Avoid multiple freeze-thaw cycles.
Concentration	1.18 mg/ml (Please refer to the vial label for the specific concentration.)
Immunogen	Recombinant protein encompassing a sequence within the center region of Zika virus Envelope protein (Zika virus (strain H/PF/2013)). The exact sequence is proprietary.
Purification	Purified by antigen-affinity chromatography.
Conjugation	Unconjugated



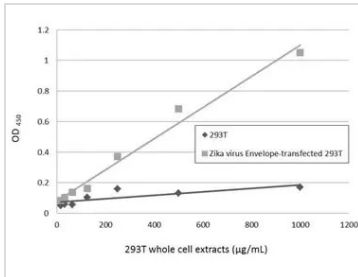
For full product information, images and publications, please visit our [website](#).

For laboratory research use only. Not for any clinical, therapeutic, or diagnostic use in humans or animals. Not for animal or human consumption.

Note

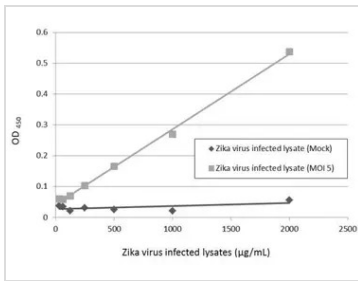
Purchasers shall not, and agree not to enable third parties to, analyze, copy, reverse engineer or otherwise attempt to determine the structure or sequence of the product.

DATA IMAGES



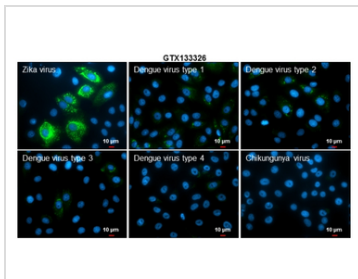
GTx133326 ELISA Image

Sandwich ELISA detection of non-transfected and transfected 293T whole cell extracts using GTx133326 as capture antibody at concentration of 5 µg/mL and GTX634155 as detection antibody at concentration of 1 µg/mL. Mouse IgG antibody (HRP) (GTX213111-01) was diluted at 1:10000 and used to detect the primary antibody.



GTx133326 ELISA Image

Sandwich ELISA detection of Zika virus-infected lysate using GTX634155 as capture antibody at concentration of 5 µg/mL and GTX133326 as detection antibody at concentration of 1 µg/mL. Rabbit IgG antibody (HRP) (GTX213110-01) was diluted at 1:10000 and used to detect the primary antibody.



GTx133326 ICC/IF Image

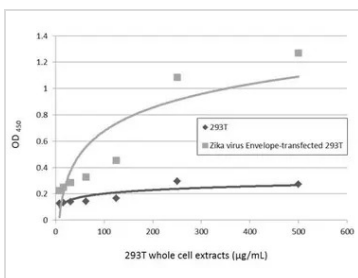
Immunofluorescent analysis of arboviruses infected cells using Zika virus Envelope protein antibody (GTx133326).

Samples: EUROIMMUN Arboviral Fever Mosaic 2 slide (FR 2668-1010-1).

Green: Zika virus Envelope protein antibody (GTx133326) diluted at 1:500.

Blue: Hoechst 33342 staining.

Scale bar = 10 µm.



GTx133326 ELISA Image

Sandwich ELISA detection of non-transfected and transfected 293T whole cell extracts using GTX634157 as capture antibody at concentration of 5 µg/mL and GTX133326 as detection antibody at concentration of 1 µg/mL. Rabbit IgG antibody (HRP) (GTX213110-01) was diluted at 1:10000 and used to detect the primary antibody.



For full product information, images and publications, please visit our [website](https://www.genetex.com).