

## Zika virus NS5 protein antibody

Cat. No. GTX133328

Host	Rabbit
Clonality	Polyclonal
Isotype	IgG
Applications	WB, ICC/IF
Reactivity	Zika virus

References ( 3 )

Package

100 µl, 25 µl

## Applications

## Application Note

\*Optimal dilutions/concentrations should be determined by the researcher.

Suggested dilution	Recommended dilution
WB	1:1000-1:10000
ICC/IF	1:100-1:1000

Not tested in other applications.

Calculated MW 103 kDa. ( [Note](#) )

## Properties

Form	Liquid
Buffer	PBS, 20% Glycerol
Preservative	0.025% ProClin 300
Storage	Store as concentrated solution. Centrifuge briefly prior to opening vial. For short-term storage (1-2 weeks), store at 4°C. For long-term storage, aliquot and store at -20°C or below. Avoid multiple freeze-thaw cycles.
Concentration	0.91 mg/ml (Please refer to the vial label for the specific concentration.)
Immunogen	Recombinant protein encompassing a sequence within the center region of Zika virus NS5 protein (Zika virus (strain H/PF/2013)). The exact sequence is proprietary.
Purification	Purified by antigen-affinity chromatography.
Conjugation	Unconjugated

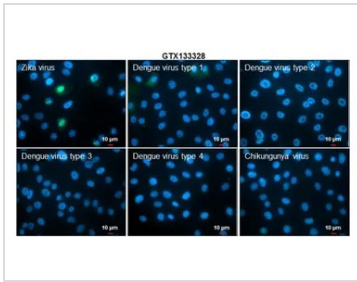
## Note

For laboratory research use only. Not for any clinical, therapeutic, or diagnostic use in humans or animals. Not for animal or human consumption.

Purchasers shall not, and agree not to enable third parties to, analyze, copy, reverse engineer or otherwise attempt to determine the structure or sequence of the product.



For full product information, images and publications, please visit our [website](#).

**DATA IMAGES**

**GTX133328 ICC/IF Image**

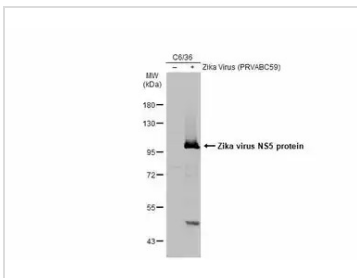
Immunofluorescent analysis of arboviruses infected cells using Zika virus NS5 protein antibody (GTX133328).

Samples: EUROIMMUN Arboviral Fever Mosaic 2 slide (FR 2668-1010-1).

Green: Zika virus NS5 protein antibody (GTX133328) diluted at 1:500.

Blue: Hoechst 33342 staining.

Scale bar = 10 μm.


**GTX133328 WB Image**

C6/36 whole cell extracts (30 μg) were separated by 7.5% SDS-PAGE, and the membrane was blotted with Zika virus NS5 protein antibody (GTX133328) diluted at 1:1000. The HRP-conjugated anti-rabbit IgG antibody (GTX213110-01) was used to detect the primary antibody.



For full product information, images and publications, please visit our [website](https://www.genetex.com).