

## SH3GL1 antibody

Cat. No. GTX133339

Host	Rabbit
Clonality	Polyclonal
Isotype	IgG
Applications	WB, IHC-Fr
Reactivity	Mouse, Rat

Package  
100 µl, 25 µl

## Applications

## Application Note

\*Optimal dilutions/concentrations should be determined by the researcher.

Suggested dilution	Recommended dilution
WB	1:500-1:3000
IHC-Fr	1:100-1:1000

Not tested in other applications.

Calculated MW 42 kDa. ( [Note](#) )

## Properties

Form	Liquid
Buffer	PBS, 20% Glycerol
Preservative	0.025% ProClin 300
Storage	Store as concentrated solution. Centrifuge briefly prior to opening vial. For short-term storage (1-2 weeks), store at 4°C. For long-term storage, aliquot and store at -20°C or below. Avoid multiple freeze-thaw cycles.
Concentration	0.83 mg/ml (Please refer to the vial label for the specific concentration.)
Immunogen	Carrier-protein conjugated synthetic peptide encompassing a sequence within the C-terminus region of mouse SH3GL1. The exact sequence is proprietary.
Purification	Purified by antigen-affinity chromatography.
Conjugation	Unconjugated

## Note

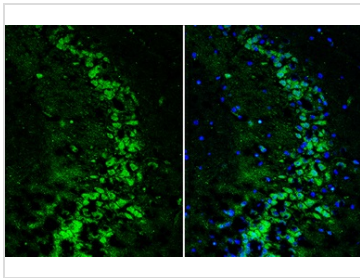
For laboratory research use only. Not for any clinical, therapeutic, or diagnostic use in humans or animals. Not for animal or human consumption.

Purchasers shall not, and agree not to enable third parties to, analyze, copy, reverse engineer or otherwise attempt to determine the structure or sequence of the product.



For full product information, images and publications, please visit our [website](#).

## DATA IMAGES



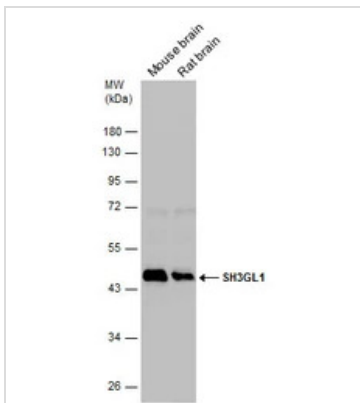
### GTX133339 IHC-Fr Image

SH3GL1 antibody detects SH3GL1 protein by immunohistochemical analysis.

Sample: Frozen-sectioned mouse hippocampus.

Green: SH3GL1 stained by SH3GL1 antibody (GTX133339) diluted at 1:250.

Blue: Fluoroshield with DAPI (GTX30920).



### GTX133339 WB Image

Various tissue extracts (10 µg) were separated by 10% SDS-PAGE, and the membrane was blotted with SH3GL1 antibody (GTX133339) diluted at 1:1000.



For full product information, images and publications, please visit our [website](https://www.genetex.com).