

DARPP-32 antibody

Cat. No. GTX133350

Host	Rabbit
Clonality	Polyclonal
Isotype	IgG
Applications	WB, ICC/IF, IHC-P, IHC-Fr
Reactivity	Mouse, Rat

References (2)

★★★★☆ Review (1)

Package

100 µl, 25 µl

Applications

Application Note

*Optimal dilutions/concentrations should be determined by the researcher.

Suggested dilution	Recommended dilution
WB	1:500-1:3000
ICC/IF	1:100-1:1000
IHC-P	1:100-1:1000
IHC-Fr	1:100-1:1000

Not tested in other applications.

Calculated MW 22 kDa. ([Note](#))

Properties

Form	Liquid
Buffer	PBS, 1% BSA, 20% Glycerol
Preservative	0.025% ProClin 300
Storage	Store as concentrated solution. Centrifuge briefly prior to opening vial. For short-term storage (1-2 weeks), store at 4°C. For long-term storage, aliquot and store at -20°C or below. Avoid multiple freeze-thaw cycles.
Concentration	0.27 mg/ml (Please refer to the vial label for the specific concentration.)
Immunogen	Recombinant protein encompassing a sequence within the C-terminus region of mouse DARPP-32. The exact sequence is proprietary.
Purification	Purified by antigen-affinity chromatography.
Conjugation	Unconjugated



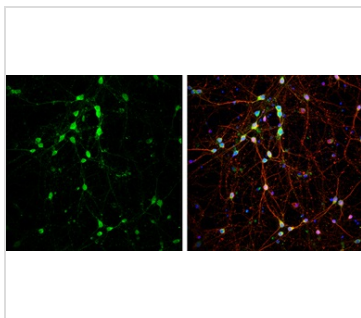
For full product information, images and publications, please visit our [website](#).

For laboratory research use only. Not for any clinical, therapeutic, or diagnostic use in humans or animals. Not for animal or human consumption.

Note

Purchasers shall not, and agree not to enable third parties to, analyze, copy, reverse engineer or otherwise attempt to determine the structure or sequence of the product.

DATA IMAGES



GTX133350 ICC/IF Image

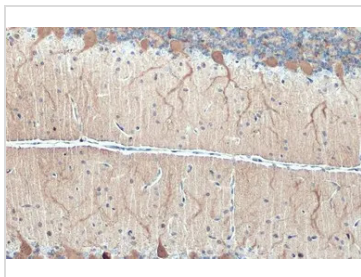
DARPP-32 antibody detects DARPP-32 protein at cell body by immunofluorescent analysis.

Sample: DIV9 rat E18 primary cortical neurons were fixed in 4% paraformaldehyde at RT for 15 min.

Green: DARPP-32 protein stained by DARPP-32 antibody (GTX133350) diluted at 1:500.

Red: beta Tubulin 3/ Tuj1, stained by beta Tubulin 3/ Tuj1 antibody [GT11710] (GTX631836) diluted at 1:500.

Fluoroshield with DAPI (GTX30920).



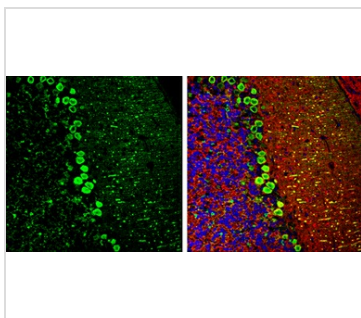
GTX133350 IHC-P Image

DARPP-32 antibody detects DARPP-32 protein at cytoplasm by immunohistochemical analysis.

Sample: Paraffin-embedded rat cerebellum.

DARPP-32 stained by DARPP-32 antibody (GTX133350) diluted at 1:500.

Antigen Retrieval: Citrate buffer, pH 6.0, 15 min



GTX133350 IHC-Fr Image

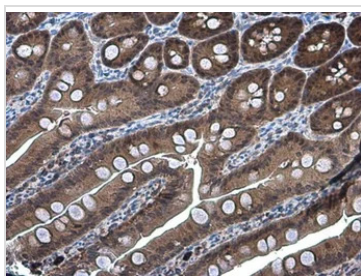
DARPP-32 antibody detects DARPP-32 protein expression by immunohistochemical analysis.

Sample: Frozen-sectioned adult mouse cerebellum.

Green: DARPP-32 protein stained by DARPP-32 antibody (GTX133350) diluted at 1:250.

Red: beta Tubulin 3/ TUJ1, stained by beta Tubulin 3/ TUJ1 antibody [GT11710] (GTX631836) diluted at 1:500.

Blue: Fluoroshield with DAPI (GTX30920).



GTX133350 IHC-P Image

DARPP-32 antibody detects DARPP-32 protein at cytoplasm in mouse intestine by immunohistochemical analysis.

Sample: Paraffin-embedded mouse intestine.

DARPP-32 antibody (GTX133350) diluted at 1:500.

Antigen Retrieval: Citrate buffer, pH 6.0, 15 min



For full product information, images and publications, please visit our [website](#).