

## SHANK2 antibody

Cat. No. GTX133352

|              |                   |
|--------------|-------------------|
| Host         | Rabbit            |
| Clonality    | Polyclonal        |
| Isotype      | IgG               |
| Applications | WB, ICC/IF, IHC-P |
| Reactivity   | Mouse, Rat        |

Package  
100 µl, 25 µl

## Applications

## Application Note

\*Optimal dilutions/concentrations should be determined by the researcher.

| Suggested dilution | Recommended dilution |
|--------------------|----------------------|
| WB                 | 1:500-1:3000         |
| ICC/IF             | 1:100-1:1000         |
| IHC-P              | 1:100-1:1000         |

Not tested in other applications.

Calculated MW 159 kDa. ([Note](#))

## Properties

|               |  |
|---------------|--|
| Form          | Liquid   |
| Buffer        | PBS, 1% BSA, 20% Glycerol  |
| Preservative  | 0.025% ProClin 300   |
| Storage       | Store as concentrated solution. Centrifuge briefly prior to opening vial. For short-term storage (1-2 weeks), store at 4°C. For long-term storage, aliquot and store at -20°C or below. Avoid multiple freeze-thaw cycles. |
| Concentration | 0.23 mg/ml (Please refer to the vial label for the specific concentration.)  |
| Immunogen     | Recombinant protein encompassing a sequence within the C-terminus region of mouse SHANK2. The exact sequence is proprietary.   |
| Purification  | Purified by antigen-affinity chromatography.   |
| Conjugation   | Unconjugated   |

## Note

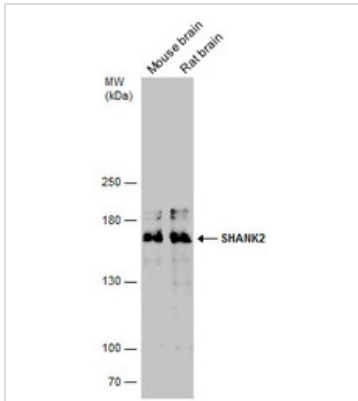
For laboratory research use only. Not for any clinical, therapeutic, or diagnostic use in humans or animals. Not for animal or human consumption.

Purchasers shall not, and agree not to enable third parties to, analyze, copy, reverse engineer or otherwise attempt to determine the structure or sequence of the product.



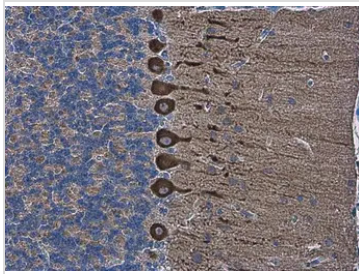
For full product information, images and publications, please visit our [website](#).

## DATA IMAGES



### GTX133352 WB Image

Various tissue extracts (10 µg) were separated by 5% SDS-PAGE, and the membrane was blotted with SHANK2 antibody (GTX133352) diluted at 1:1000.



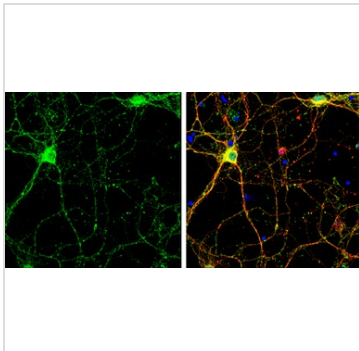
### GTX133352 IHC-P Image

SHANK2 antibody detects SHANK2 protein at cytoplasm in rat brain by immunohistochemical analysis.

Sample: Paraffin-embedded rat brain.

SHANK2 antibody (GTX133352) diluted at 1:500.

Antigen Retrieval: Citrate buffer, pH 6.0, 15 min



### GTX133352 ICC/IF Image

SHANK2 antibody detects SHANK2 protein at cell body and synaptic vesicles by immunofluorescent analysis.

Sample: DIV9 rat E18 primary cortical neurons were fixed in 4% paraformaldehyde at RT for 15 min.

Green: SHANK2 protein stained by SHANK2 antibody (GTX133352) diluted at 1:500.

Red: beta Tubulin 3/ Tuj1, a neuron cell marker, stained by beta Tubulin 3/ Tuj1 antibody [GT11710] (GTX631836) diluted at 1:500.

Blue: Fluoroshield with DAPI (GTX30920).



For full product information, images and publications, please visit our [website](https://www.genetex.com).