

alpha Internexin antibody

Cat. No. GTX133356

Host	Rabbit
Clonality	Polyclonal
Isotype	IgG
Applications	WB, ICC/IF, IHC-P, IHC-Fr
Reactivity	Mouse, Rat

References (1)

★★★★★ Review (1)

Package

100 µl, 25 µl

Applications

Application Note

*Optimal dilutions/concentrations should be determined by the researcher.

Suggested dilution	Recommended dilution
WB	1:500-1:3000
ICC/IF	1:100-1:1000
IHC-P	1:100-1:1000
IHC-Fr	1:100-1:1000

Not tested in other applications.

Calculated MW 56 kDa. ([Note](#))

Properties

Form	Liquid
Buffer	PBS, 1% BSA, 20% Glycerol
Preservative	0.025% ProClin 300
Storage	Store as concentrated solution. Centrifuge briefly prior to opening vial. For short-term storage (1-2 weeks), store at 4°C. For long-term storage, aliquot and store at -20°C or below. Avoid multiple freeze-thaw cycles.
Concentration	0.24 mg/ml (Please refer to the vial label for the specific concentration.)
Immunogen	Recombinant protein encompassing a sequence within the C-terminus region of mouse alpha Internexin. The exact sequence is proprietary.
Purification	Purified by antigen-affinity chromatography.
Conjugation	Unconjugated



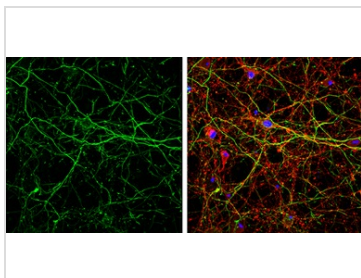
For full product information, images and publications, please visit our [website](#).

For laboratory research use only. Not for any clinical, therapeutic, or diagnostic use in humans or animals. Not for animal or human consumption.

Note

Purchasers shall not, and agree not to enable third parties to, analyze, copy, reverse engineer or otherwise attempt to determine the structure or sequence of the product.

DATA IMAGES



GTX133356 ICC/IF Image

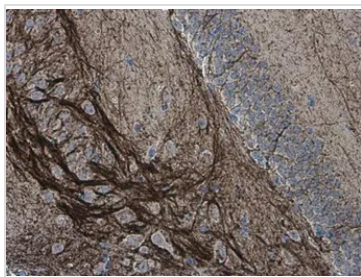
alpha Internexin antibody detects alpha Internexin protein by immunofluorescent analysis.

Sample: DIV14 rat E18 primary cortical neurons were fixed in 4% paraformaldehyde at RT for 15 min.

Green: alpha Internexin protein stained by alpha Internexin antibody (GTX133356) diluted at 1:500.

Red: beta Tubulin 3/ Tuj1, stained by beta Tubulin 3/ Tuj1 antibody [GT1338] (GTX631831) diluted at 1:500.

Blue: Fluoroshield with DAPI (GTX30920).



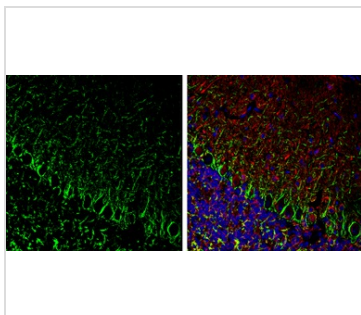
GTX133356 IHC-P Image

alpha Internexin antibody detects alpha Internexin protein at neurofilament in mouse brain by immunohistochemical analysis.

Sample: Paraffin-embedded mouse brain.

alpha Internexin antibody (GTX133356) diluted at 1:500.

Antigen Retrieval: Citrate buffer, pH 6.0, 15 min



GTX133356 IHC-Fr Image

alpha Internexin antibody detects alpha Internexin protein expression by immunohistochemical analysis.

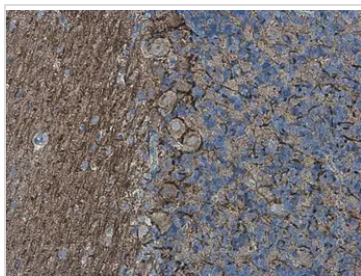
Sample: Frozen-sectioned adult mouse cerebellum.

Green: alpha Internexin protein stained by alpha Internexin antibody (GTX133356) diluted at 1:250.

Red: beta Tubulin 3/ Tuj1, stained by beta Tubulin 3/ Tuj1 antibody [GT886] (GTX631830) diluted at 1:500.

Blue: Fluoroshield with DAPI (GTX30920).

Antigen Retrieval: Citrate buffer, pH 6.0, 10 min



GTX133356 IHC-P Image

alpha Internexin antibody detects alpha Internexin protein at neurofilament in rat brain by immunohistochemical analysis.

Sample: Paraffin-embedded rat brain.

alpha Internexin antibody (GTX133356) diluted at 1:500.

Antigen Retrieval: Citrate buffer, pH 6.0, 15 min



For full product information, images and publications, please visit our [website](#).